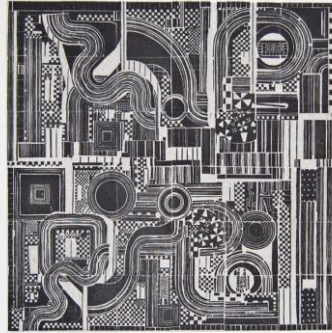


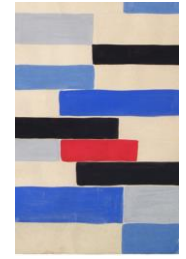
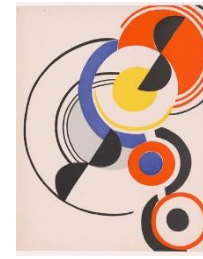
Knowledge Organiser: Year 10 GCSE Three-Dimensional Design: 'Clay & Casting'



Sir Eduardo Luigi Paolozzi (7 March 1924 – 22 April 2005) was a Scottish artist, known for his sculpture and graphic works. He was the son of Italian parents.

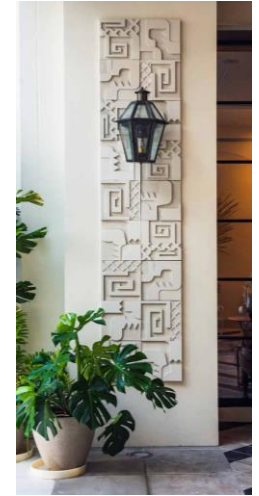
He was a founder of pop art and like to combine machinery and figures within his artwork, he reflected on popular culture and the society of his time. Paolozzi created collages, prints, sculpture and textiles.

Sonia Delaunay (13 November 1885 – 5 December 1979) was born in Ukraine, but spent much of her working life in Paris, France. She practised in painting, textiles, fashion and set design. Her work is abstract and based on geometric forms.



Sanna Annukka (born 1983) is a British/Finnish artist. She creates geometric prints and ceramic work that are composed of smaller sections and geometric shapes.

Kathy Dalwood is a British artist who works using plaster and concrete casting. She makes sculptures, friezes and commissions-including a series of concrete tiles created for a hotel owned by Pharrell Williams!



When working with clay you...

- **must NOT release clay dust into the atmosphere by banging or waving equipment with dry clay on**
- **must wipe down all surfaces with a damp cloth then dry it**

concentric	overlaid shapes with the same centre point
ceramics	items made from clay and hardened by heat
relief	a method of moulding or carving when a design stands out from the surface
slip	a mix of water and clay used to stick two pieces of clay together
ceramic glaze	a liquid painted and fused onto clay with heat to create an impervious surface
plaster	a substance created by mixing powdered gypsum and water
casting	the process of pouring a material into a mould
impression	a mark impressed on a surface
slab building	a method of creating three-dimensional forms in clay using manipulated slabs

