

Y9 An Inspector Calls- Knowledge Organiser

The Big Idea!

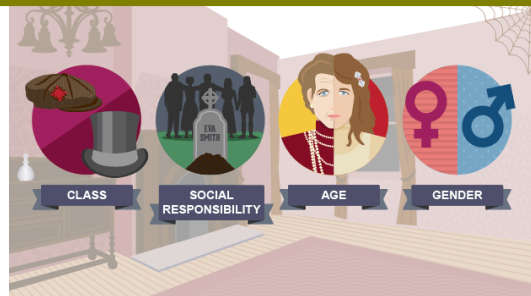
"To different minds, the same world is a hell, and a heaven." – J.B Priestley

What do you think this means? Explain your idea!

Social and Historical Context:

An Inspector Calls was first performed in 1945 at a time of great change – both World Wars were fresh in the minds of the people. women had become more prominent in the workplace and it was possible to be class mobile (progress up the class system)..

It is set in 1912 – this means that the characters have no knowledge of these world events. Priestley uses this to make important points about society and responsibility.



Themes

Capitalism vs. Socialism



Key Concepts

Social Responsibility



Class-divide



Characters as a Construct

Social Commentary



How does each character contribute to Eva Smith's death?

Mr Birling	Mrs Birling	Sheila	Eric	Gerald



Theatrical Stagecraft: Dramatic Devices

Dramatic irony	Birling's speeches, Mrs. Birling's witless implication of Eric
Stage directions	Instructions for the actors; often revealing – such as the lighting change when the Inspector arrives: "Pink and intimate then brighter and harder"
Setting	Constant throughout but subtle changes e.g. lighting; characters on/off stage
Tension	Builds up throughout the play ; interrogation of characters, personal relationships, secrecy
Cliff-hanger	Eric's reappearance in Act 3; the ending allows the audience to make up their minds
Foreshadowing	Symbolism (The Titanic), Mr. Birling's "knighthood", war
Time-lapse	Set in 1912, written in 1945; audience in a privileged position.
The 4 th Wall	The Inspector's final speech addressed directly to audience.