

Think  **BIG**




**SUCCEED
TOGETHER**

Pathways



Options
2025

4	Introduction & Key Subjects
7	Careers Education, Information, Advice & Guidance
8	GCSE Art & Design
9	GCSE Business
10	GCSE Computer Science
11	Cambridge Nationals Creative iMedia
12	GCSE Drama
13	GCSE English Language
14	GCSE English Literature
15	GCSE Geography
16	GCSE Health & Social Care
17	GCSE History
18	WJEC Vocational Award in Hospitality & Catering (Technical Award)
19	GCSE Mathematics
20	BTEC Music Practice
21	GCSE Physical Education
22	GCSE Religious Education
23	GCSE Separate Sciences
24	GCSE Combined Science Trilogy
25	Modern Foreign Languages GCSE French/Spanish
26	GCSE Statistics
27	GCSE Photography

TABLE OF

CONTENTS

Introduction

This booklet is designed to help you decide what subject pathway you would like to choose to study in Years 10 & 11. It will give you details of all the pathways you can choose and some key information about each subject. It is very important that you read all of the information carefully before you make your decision.

After half term, all students will have a one-to-one meeting with a member of the Senior Leadership Team, and we ask you to look through this booklet over half term in preparation for these meetings.

When choosing your pathway, it is important to remember that most colleges, sixth forms, apprenticeships and universities prefer you to have a broad range of subjects which may be purely academic, or may include some vocational qualifications. You are more likely to secure places on the courses of your choice if you have achieved well and have succeeded in that subject. It may be hard to believe, but some university courses may not even require you to have studied the subject that you would like to specialise in at college or sixth form if you have a good range of subjects. For example, if you are interested in psychology, most universities would prefer strong science qualifications to one in psychology. It is with this in mind that we have designed your subject pathways. If you choose from the pathways outlined here, you will be better equipped for further study.

Core Subjects

All students study the following subjects:-

- English Language
- English Literature
- Mathematics
- Physical Education
- Science
- History or Geography (students can study both)
- French/Spanish

In addition, you will study the following as part of other subjects or during form time activities.

- Careers
- Citizenship
- Physical, Social & Health Education (PSHE)
- Religious Studies

Subject Pathways

Please study the course information in your pathways book carefully.

Your first decision will be around whether you would like to study history or geography (or both), and secondly whether you wish to study Spanish or French. We will help you in your meeting if you need guidance with this. You will have a total of 4 option choices which include these, but we will be asking you to make a 5th choice as a backup just in case any of your preferred subjects cannot run due to small numbers selecting them.

Once you have made your choices, please fill in the form sent home with this booklet and bring the information to your meeting. The member of staff meeting with you will have recommendations from your teachers as to what courses they think you will be good at and this can help you if you are unsure.

Choose one of these;	Choose one of these;
GCSE History	GCSE Spanish
GCSE Geography	GCSE French

Then choose any two of these;	
GCSE Art & Design 1) Art, Craft & Design 2) Three-Dimensional Design	WJEC Vocational Award in Hospitality & Catering
GCSE Business	BTEC Music Practice
GCSE Computer Science	GCSE Photography
Cambridge National in Creative iMedia	GCSE Physical Education
GCSE Drama	GCSE Religious Education
BTEC Health & Social Care	GCSE Separate Sciences (Triple Science)
	GCSE Statistics

It is important to note that none of these subjects are easier than others: however, the ways in which they are assessed may suit different types of learners. If you choose an option with a high portfolio content then it will be expected that you spend a significant amount of time outside normal lesson time working on your portfolio. We would encourage all students to study a maximum of two courses with a high portfolio content.

On the next page is a table of information to guide you on the weightings of examination and portfolio for each subject which can be used to inform your decisions. For this reason, students are limited to a maximum of two vocational courses (highlighted in red).

Subject	Exam	Portfolio
Art/3D Design	40%	60%
Business	100%	0%
Computer Science	100%	0%
Drama	40%	60%
English	100%	0%
Geography	100%	0%
Health & Social Care	40%	60%
History	100%	0%
Hospitality & Catering	40%	60%
Creative iMedia	40%	60%

Subject	Exam	Portfolio
Maths	100%	0%
Music Practice	40%	60%
PE	60%	40%
Photography	40%	60%
RE	100%	0%
Science Combined	100%	0%
Triple Science	100%	0%
Spanish/French	100%	0%
Statistics	100%	0%

To enhance the core curriculum on offer to students, a range of high quality extra-curricular sessions will be offered after school – a list outlining these subjects is available on our website.





Careers Education, Information, Advice & Guidance (CEIAG)

Over the last few years, the education and training options for young people after Year 11 have changed.

These options all have different methods of study and assessment, so students can choose the option that suits them the best. The entry requirements vary but, for all subjects at all levels, providers like to see a breadth of subjects at GCSE level. A basic summary is available below:

GCSEs which lead to one of:				
Type	A LEVELS	T LEVEL	VOCATIONAL	APPRENTICESHIP
Summary	3-4 subjects Theory-based Mostly exams	1 subject Mix of exam, coursework & work placement 20% work based	1 subject More practical work Mostly coursework	1 subject/job role Paid work 80% work, 20% training
Entry Requirements	Min. 5 x GCSEs at grade 5+ Plus additional subject requirements	Min. 5 x GCSEs at grade 4-5+	Varied requirements eg.: Level 3 - 5 x GCSEs at grade 4- 5+ Level 2 - 5 x GCSEs at grade 4+ Level 1 - 3 x GCSEs at grade 3+	Varied requirements
Time	2 years	2 years	1-5 years	Varied duration, 1 year +
Provider	Sixth Form or College	College	College	Employer with College or Training Provider

Alternative options are available at entry level, if students achieve grade 2 or below in their GCSE subjects. These vary from supported internships, foundation pathways, life skills and entry level vocational courses.

All of these post-16 options can lead to a university degree, higher/degree apprenticeship or employment, although some routes have more specific entry requirements than others. During the next two years at Shuttleworth College, your child will continue to receive different aspects of careers education, culminating in at least one Information, Advice & Guidance (IAG) appointment in Year 11 to plan out their individual choices in detail.

More CEIAG information can be found on the careers page of the school website:
www.shuttleworthcollege.org/curriculum/careers



GCSE Art & Design

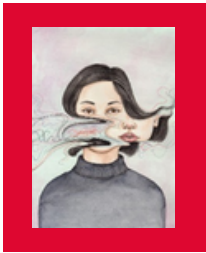
AQA GCSE Art & Design Courses

Please note that you can only select Art or 3D Design.

Whichever art course you prefer, there are key aspects that run through both:

- drawing and written annotation is a key element of all art and design courses and this must be mastered by students in order to secure the highest grade bands
- all pupils are required to keep a sketchbook or create presentation sheets that document their journey through their GCSE projects
- pupils are required to demonstrate enthusiasm and dedication as they are expected to commit significant time out of school hours to the completion of tasks

What can I study?



OPTION 1: GCSE Art, Craft & Design

This will suit you if:

- *you enjoy primarily enjoy drawing and painting*
- *you would like to work in a wide range of artistic disciplines including paint, printing, mixed media, ceramics, sculpture, textiles, photography and photo manipulation.*



OPTION 2: GCSE Three Dimensional Design

This will suit you if:

- *you prefer sculpting and building outcomes using a range of materials*
- *you would like to focus on the use of materials such as ceramics, wood, plaster, found objects and the use of CAD/CAM- using software such as Serif Draw and the laser cutter.*
- *you would like to develop and create designs for sculpture, architecture, jewellery, interiors and everyday objects.*

How will I be assessed? All GCSE Art courses are assessed as follows:

- **Unit 1 – NEA - Portfolio of work - 60% of the final GCSE grade.**

This consists of all the work completed in Year 10 and in the autumn term of Year 11.

- **Unit 2 – NEA - Externally set assignment - 40% of the final GCSE grade.**

A final exam project begun in January of Year 11. A 12 week preparatory period concludes in a 10 hour exam in which pupils must produce a previously researched and planned final artwork without assistance.

How will this subject help me progress to college & university?

What kind of careers could I follow with this subject?

All GCSE Art & Design courses will give you the opportunity to pursue college diplomas or A Levels in a range of art and design based subjects. This will then lead to an Art Foundation course (Pre Bachelor of Arts) and then a degree course at university which will take 3 to 4 years to complete. All the courses above offer you opportunities to interpret ideas visually whilst educating you about the role of art and design in society. They cover some aspects of skills used in the fine art, textile, fashion, three dimensional design and graphics industries. Art GCSEs are particularly important if you are interested in careers such as fashion/textiles, photography, television and film, advertising, theatre, illustration, interior/commercial design and architecture as well as careers where imagination and presentation skills are required.



GCSE Business



How will I be assessed?

At the end of year 11, students will sit two examined components that are externally assessed.

Paper 1 assesses content from business activity, marketing and human resources.

Paper 2 assesses content from operations, finance and influences on business. It also includes synoptic questions which assume knowledge of business activity, marketing and human resources.

Each paper is 90 minutes long and worth 80 marks, split into two sections. Section A on each paper contains multiple choice questions worth 15 marks. Section B includes short, medium and extended response questions using stimulus material drawing on real business contexts.



What will I study?

GCSE Business equips students with the skills and confidence to explore how different business situations affect decision-making. The course develops understanding of key business concepts, objectives and terminology, and the impact of contemporary issues on business operations.

Students will be introduced to business concepts and issues concerning the activities of a business. They explore the purpose and role of a business from spotting an opportunity through to the growth of an established business. They also look at the role of marketing and human resources.

In year 11, students take a closer look at the role of operations and finance in business activity. Operations include production processes, quality of goods and services, customer service, and working with suppliers. Finance covers its role, its sources, costs, profit and loss, cash and cash flow. They also explore how business responds to external influences, such as ethical and environmental considerations, the economic climate and globalisation, and the interdependent nature of business.

How will this subject help me progress to college/sixth form & university?

Depending on the grade the student achieves, students can progress to a range of courses such as Level 2 Technical Certificates in; Accounting, Accounting and Business, Business Administration, Business and Enterprise, Customer Service Operations, Business Support. or Level 3 courses such as Enterprise and Entrepreneurship, Financial Studies, Business and Enterprise, Applied Business, Marketing, or an apprenticeship within sectors such as a Finance, Marketing or Human Resources.

What kind of careers could I follow with this subject?

This course will prepare students to follow a rewarding career in business and enterprise and beyond. This could be as a self-employed entrepreneur, working within a large corporation or even transferring these skills in a sector you may not expect.

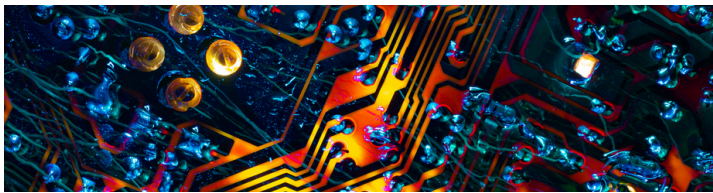


GCSE Computer Science

What will I study?

OCR's GCSE (9–1) in Computer Science will encourage students to:

- Understand and apply the fundamental principles and concepts of Computer Science, including abstraction, decomposition, logic, algorithms, and data representation
- Analyse problems in computational terms through practical experience of solving such problems, including designing, writing and debugging programs
- Think creatively, innovatively, analytically, logically and critically
- Understand the components that make up digital systems, and how they communicate with one another and with other systems
- Understand the impacts of digital technology to the individual and to wider society
- Apply mathematical skills relevant to Computer Science.



Paper 1: Computer Systems. In this unit you will learn about:

- Systems Architecture
- Memory and storage
- Computer networks, connections and protocols
- Network Security
- Systems Software
- Ethical, legal, cultural and environmental impacts of digital technology

Paper 2: Computational thinking, algorithms and programming. In this unit you will learn about:

- Algorithms
- Programming fundamentals
- Producing robust programs
- Boolean logic
- Programming languages and Integrated Development Environments

How will this subject help me progress to college/sixth form & university?

This course gives you a wide range of skills that can be used to access A Level, technical or vocational courses in Computing and Computer Science such as Games Design, Programming and Computer Science. To be able to study computing/computer science at A Level you should aim for at least a grade 6 in your GCSE. A grade 6 or above in GCSE Computing will allow you to access other related courses.

What kind of careers could I follow with this subject?

The IT and Telecoms industry is the fastest growing industry in the UK. A Computer Science GCSE will open the door to a wide range of careers (the list is endless!), with job opportunities in systems development, IT infrastructure management, cyber security. Many computing graduates work as software, game and app developers and in the security services as programmers.



How will I be assessed?

Students will be assessed at the end of Year 11 as follows:

Paper 1: Computer Systems

- Written paper: 1 hour and 30 minutes
- 50% of total GCSE
- 80 marks
- This is a non-calculator paper
- All questions are mandatory
- This paper consists of multiple choice questions, short response questions and extended response questions

Paper 2: Computational thinking, algorithms and programming

- Written paper: 1 hour and 30 minutes
- 50% of total GCSE
- 80 marks
- This is a non-calculator paper
- Split into sections A and B
- In Section B, questions assessing students' ability to write or refine algorithms

Cambridge Nationals Creative iMedia

How will I be assessed?

The course is assessed at the end of the qualification and is equivalent to GCSE grading.

Grades are based on assessment across all three units.

- R093 – worth 40%
- R094 – worth 25%
- R095 – worth 35%

Students will be awarded a grade from Pass at Level 1 through to Distinction* at level 2.



What kind of careers could I follow with this subject?

This qualification allows you to access a wide variety of careers in the media sector due to the use of specialist equipment and software.

Examples include:

- Graphic designer
- Web designer
- TV production
- Photography
- Game design
- Animation

What will I study?

Digital Media is a key part of many areas of our everyday lives and vital to the UK economy. Production of digital media products is a requirement of almost every business so there is huge demand for a skilled and digitally literate workforce. You will study the following THREE units:

Unit R093 (external exam): Creative iMedia in the media industry. This is assessed via an exam – 1 hour 30 mins [40%]

In this unit you will learn about the media industry, digital media products, how they are planned, and the media codes which are used to convey meaning, create impact and engage audiences.

Topics include:

- The media industry
- Factors influencing product design
- Pre-production planning
- Distribution considerations

Unit R094 (internal controlled assessment): Visual identity and digital graphics. This is assessed via by completing a set assignment [25%]

In this unit you will learn to how to develop visual identities for clients and use the concepts of graphic design to create original digital graphics to engage target audiences. Topics include:

- Develop visual identity
- Plan digital graphics for products
- Create visual identity and digital graphics
- You will also learn a range of design skills using the Adobe Creative Suite including Photoshop and Illustrator.

Unit R095 (internal controlled assessment): Characters & Comics. This is assessed via by completing a set assignment [35%]

In this unit you will learn how to plan, create and review comics which contain original characters. Topics include:

- Plan characters and comics
- Create characters and comics
- Review characters and comics

How will this subject help me progress to college/sixth form & university?

This course gives you a wide range of skills that can be used to access A Level, technical or vocational courses in Media or Computing such as Games Design, Creative Media Production and Computing which will then help progression to degree level Computing, Media Studies, Digital Media and Digital Marketing. To be able to study these courses in college you need to aim for at least a Merit grade in your Cambridge Nationals Creative iMedia course.



GCSE Drama

What will I study?

GCSE Drama is a highly appealing course due to the diverse range of activities, combining both practical and theoretical approaches to learning. This combination of academic and creative challenge with a practical focus makes for a dynamic and engaging course. GCSE Drama enables students to learn to explore real life in a safe environment and prepares them for the wider world. This course is suitable for students who want a firm foundation in drama, learning to analyse script, devise, develop, interpret and communicate practical outcomes. By understanding the process involved in drama they will improve their own performance skills, develop their imagination and the ability to create drama. You will learn how to communicate intention, both as an individual and as part of a group. You will develop the skill of working with others - teamwork, which is an essential skill for life. You will develop your critical skills, through evaluation, analysis and reflection.



How will I be assessed?

Controlled Assessments:

Component one: Devising (40%) –

Students will create and develop a devised piece from a stimulus and perform the piece along with analysing and evaluating the process and performance.

Component two: Performance from a Text (20%) –

Students will either perform in and/or design for two key extracts from a performance text.

Component three (40%) - This component focuses on the work of theatre makers and theatrical choices. There are two areas of focus – study of one complete performance text and a live theatre evaluation.



How will this subject help me progress to college/sixth form & university?

GCSE Drama is an excellent starting point for further study at A Level and for University degree courses. Students of drama develop creative skills, as well as knowledge and understanding of the arts thus preparing them to study courses such as: Performance Studies, Drama & Theatre Studies, Performing Arts, Media Studies, English Language and Literature, Philosophy, Sociology and Psychology, Dance, Music and Art. Cross-curricular opportunities, such as the investigation of specific periods of time and locations relating to the drama context support the study of humanities. Additionally, students develop generic skills that feed into all courses: speaking and listening, research and investigation, analysis and evaluation, public speaking and presentation, social skills, confidence, as well as literacy.

What kind of careers could I follow with this subject?

The study of GCSE Drama paves the way to a wide range of career possibilities, including those involving public speaking and presenting, leadership and management, group co-operation and interaction, performing and communicating, teaching and learning, problem solving and investigation, and analysis and evaluation. It should be noted that GCSE Drama is a very demanding subject and students will be expected to attend extra rehearsals outside of normal school hours.

GCSE English Language



What will I study?

All students work towards GCSE English Language. The programme of study encourages students to read a wide range of texts, write for specific purposes and develop speaking and listening skills. The aim is to be able to use language in a wide range of contexts in order to participate effectively in society and employment. The programme of study also develops students' skills in communication, problem solving, critical thinking and working with others. The topics and assessment methods are explained below. In addition, students are provided with many enrichment opportunities: theatre trips; visits from authors, poets and lecturers; speaking & listening activities and opportunities for wider reading.

How will I be assessed?

Year groups will be studying for GCSE qualifications in line with government requirements. Students will be formally assessed via 100% external examinations. Students will be given regular opportunities in class to practise key exam skills in reading & writing to support examination success.



How will this subject help me progress to college/sixth form & university?

English Language is a key qualification for acceptance onto most college or sixth form courses and most ask for at least a grade 5 or equivalent. To be able to successfully study English Language at A Level you should aim for at least a grade 6 in your GCSEs. At A Level, a grade C or above will help you gain access to a variety of university courses.



What kind of careers could I follow with this subject?

English Language is a qualification that can support a wide range of career choices as many professions require a good standard of verbal and written communication. If you choose to study English Language at university many graduates go on to become teachers, barristers, solicitors, journalists and writers.



GCSE English Literature



How will I be assessed?

All students will be studying for GCSE qualifications in line with government requirements; students will be formally assessed via 100% examinations. The examinations will focus on extracts from the texts and expect students to write extended essays and analyse characterisation and plot. Texts studied will include Shakespeare, modern and 19th century texts and poetry.



What kind of careers could I follow with this subject?

English Literature is a qualification that can support a wide range of career choices. The most obvious is teaching although employers often look for Literature when seeking to fill all types of management roles. Literature demonstrates the ability to handle large amounts of information in critical and creative ways. Literature develops one's intellectual capacities and those skills can be broadly applied anywhere from managing a car sales department, to banking or retail.

What will I study?

All students work towards GCSE English Literature alongside English Language. The programme of study encourages students to read a wide range of texts (plays, poems and prose), and should extend students' enthusiasm for literature and how it influences the reader. Students explore texts from different cultures and traditions, connect ideas over time and become critical readers as well as enjoying reading for pleasure. The programme of study also develops students' skills in communication, critical thinking, working with others, and develops an appreciation of the world we live in.



How will this subject help me progress to college/sixth form & university?

To be able to successfully study English Literature at A level you should aim for at least a grade 6 in your GCSEs. At A level a good English grade or above will help you gain access to a variety of university courses. English Literature is a 'facilitating subject' – this means that many universities prefer it to other qualifications as it provides a good foundation for degree study no matter your choice of specialism.



GCSE Geography

What will I study?

The Geography GCSE curriculum offers a range of topics that appeal to different types of learners. Both human and physical geography topics are covered in KS4 in equal measure and these build on the skills and knowledge gained in Key Stage 3. Fieldwork is conducted in an urban location and a more natural environment, where you will use practical research and data collection skills to collect and analyse information in the classroom in preparation for your examinations.

AQA GCSE Geography

Paper 1: Living with the Physical Environment

- Section A – The Challenge of Natural Hazards
- Section B – The Living World
- Section C – Physical Landscapes in the UK

Paper 2: Challenges of the Human Environment

- Section A – Urban Issues and Challenges
- Section B – The Changing Economic World
- Section C – The Challenge of Resource Management

Paper 3: Geographical Applications and Skills

- Issue Evaluation
- Fieldwork
- Geographical Skills

How will I be assessed?

There are three exams at the end of Year 11, each paper is 1 hour 30 minutes.

- Papers 1 and 2 are each worth 35% of the GCSE.
- Paper 3 is worth the final 30%.

The course is exam-based only; there is no controlled assessment element.

The AQA GCSE exams in Geography include questions that allow students to demonstrate their ability to:

- Draw together their knowledge, understanding and skills from across the full course of study
- Provide extended responses

You will be regularly tested to ensure that you are making progress towards your target and to ensure revision strategies and exam skills specific to Geography are in place before your final examinations.

Test questions are taken from past exam papers to make the process relevant to you and an accurate reflection of your ability.

How will this subject help me progress to college/6th form & university?

Geography GCSE will prepare you with a wide range of skills that future employers and higher education providers want to see in our young people. It teaches you about people, instilling tolerance and understanding to different cultures as well as developing young people's curiosity. GCSE Geography is a sound base from which to progress to A Level studies and beyond.

What kind of careers could I follow with this subject?

Geography GCSE can lead you to a wide range of careers, including, but not exclusive to planning, economics, aid and charity work, politics and governance, environmental management, construction, armed forces, landscape architecture. For an in-depth look at careers in geography, check the Royal Geographic Association website that dedicates a large area to exploring careers through geography: <https://www.rgs.org/geography/choose-geography/careers/>



BTEC Health & Social Care

What will I study?

The Health and Social Care BTEC is designed for students who are interested in social work, health care and childcare. It provides a practical, real-life approach and develops the specific knowledge and skills students need to work successfully in the care industry, such as:

- Working with a range of service users from babies, toddlers, through to adults with specific needs and the elderly
- Communication skills to support people with a range of needs
- Developing project management and independent learning skills by exploring provision of services in the sector



How will I be assessed?

There are three units in total that must be studied to gain the Health and Social Care BTEC.

1. Human Lifespan Development.
2. Health & Social Care Services & Values.
3. Health & Wellbeing.

The first two of these units will be assessed by the class teacher through marking assignment portfolios that are completed in lessons. The third unit is assessed by an external examination at the end of year 11.



How will this subject help me progress to college/sixth form & university?

This course aims to give students a broader understanding and knowledge of health and social care careers, developing the skills and qualities valued by employers and further education colleges. Students who wish to continue their studies in health and social care or begin training for a specific health and social care career are better prepared if they have completed this Level 2 BTEC.

What kind of careers could I follow with this subject?

There are many careers that involve a study of Health and Social Care and all involve working with people. These include care assistant, care home manager, health visitor, nurse, nursery nurse and social worker.

GCSE History

What will I study?

Paper 1

Medicine Through Time c1250–present and the British sector of the Western Front, 1914–18.

In this unit you will learn about:

- c1250–c1500: Medicine in medieval England
- c1500–c1700: The Medical Renaissance in England
- c1700–c1900: Medicine in eighteenth- and nineteenth-century Britain
- c1900–present: Medicine in modern Britain
- You will do a source-based enquiry on the British sector of the Western Front, 1914–18: covering injuries, treatment and the trenches.

Paper 2

Superpower relations and the Cold War, 1941–91

In this unit you will learn about:

- The origins of the Cold War, 1941–58
- Cold War crises, 1958–70
- The end of the Cold War, 1970–91

Period study and British depth study - Anglo-Saxon and Norman England, c1060–88

In this unit you will learn about:

- Anglo-Saxon England and the Norman Conquest, 1060–66
- William I in power: securing the kingdom, 1066–87
- Norman England, 1066–88

Paper 3

Weimar and Nazi Germany, 1918–39

In this unit you will learn about:

- The Weimar Republic 1918–29
- Hitler's rise to power, 1919–33
- Nazi control and dictatorship, 1933–39
- Life in Nazi Germany, 1933–39

How will I be assessed?

At the end of the 2 years you will sit 3 exam papers.

- Paper 1: Thematic study and historic environment

This is a written examination lasting 1 hour and 15 minutes. This equates to 30% of your final grade.

- Paper 2: Period study and British depth study

This is also a written examination lasting 1 hour and 45 minutes. This paper will make up 40% of your final grade.

- Paper 3: Modern depth study

This written examination lasts 1 hour and 20 minutes and is 30% of your final grade.

There will be a variety of questions in the examination papers. Your teacher can show you some examples to help you practise and succeed. Examiners want you to do well and will be looking for comments to reward rather than looking to spot mistakes or gaps in your knowledge. Many of the questions will be like those you have already done in Key Stage 3.

How will this subject help me progress to college/sixth form & university?

History is a key qualification for acceptance onto many college or sixth form courses and most will ask for at least a grade 4, but check with your chosen further education provider. An A Level in history will help you gain access to a variety of university courses.

What kind of careers could I follow with this subject?

History is a qualification that can support a wide range of career choices as many professions require the good standard of verbal and written communication that GCSE History demands. In recent research about jobs in the futures, the skill of analysis features heavily and, as you know, this is something that we have been practising in history since Y7. If you choose to study history at university many graduates go on to become teachers, barristers, solicitors, journalists and writers, politicians and professional historians!



WJEC Vocational Award in Hospitality and Catering (Technical Award)

What will I study?

The WJEC Vocational Award in Hospitality and Catering has been designed to provide learners with the opportunity to develop a range of specialist and general skills that would support their progression to further study and employment in the field of hospitality. You will study two units: The Hospitality and Catering Industry & Hospitality and Catering in Action. Within these units you will learn how hospitality and catering providers operate and what they have to take into account to be successful. You will develop knowledge of issues related to nutrition and food safety, develop food preparation and cooking skills, as well as transferable skills of problem solving, organisation and time management, planning and communication.

How will I be assessed?

The two units of work are assessed in different ways:

Unit 1 - The Hospitality and Catering Industry (40% of final grade)

A 90 minute online examination taken in June of Year 11.

Unit 2 - Hospitality and Catering in Action (60% of final grade)

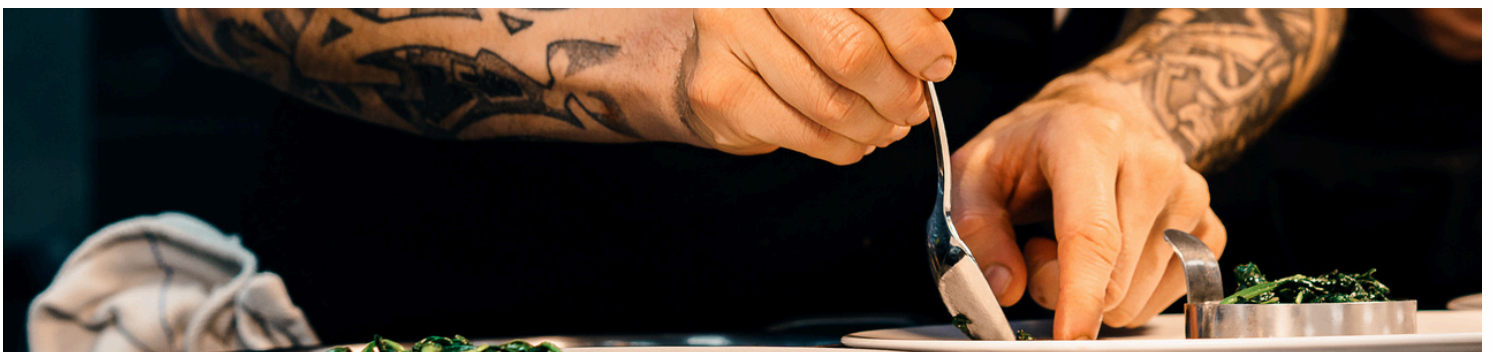
An internally assessed non-exam assessment (NEA) assignment.



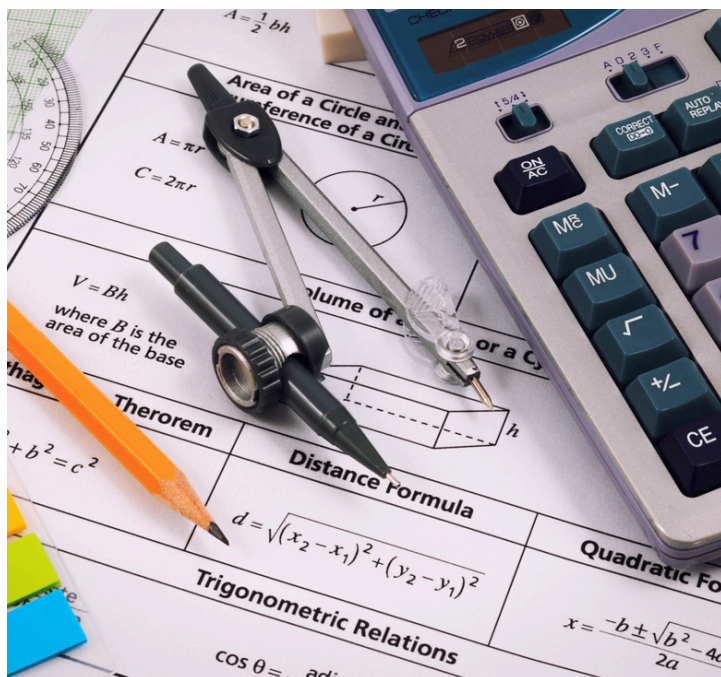
How will this subject help me progress to college/sixth form & university?

What kind of careers could I follow with this subject?

Successful completion of this qualification could support entry to further Level 2 and 3 qualifications or A Levels that develop specific skills for work in hospitality and catering including professional food and beverage skills, professional cookery and food, science and nutrition. According to the British Hospitality Association, hospitality and catering is Britain's fourth largest industry and accounts for around 10% of the total workforce. Since 2010, over 25% of all new jobs have been within the hospitality and catering sector with the majority of new roles falling within the 18-24 age groups. This course could lead to careers in areas such as catering, hotel and bar management, food technology, tourism and event management.



GCSE Mathematics



How will I be assessed?

All students will be studying for the GCSE qualifications. There are two tiers of entry: Foundation (grades 1-5) and Higher (grades 4-9). Students will continue to be formally assessed entirely through external examinations at the end of Year 11 in Mathematics, via three exams with equal weighting towards their final grade. These papers will consist of one non-calculator paper, and two calculator papers. Students will be regularly assessed in the classroom to monitor progress, and given regular opportunities to practice key skills to support examination performance.



What will I study?

All students work towards GCSE Mathematics. The programme of study requires students to study six key mathematical principles: number, algebra, ratio, proportion and rates of change, geometry and measures, probability and statistics. There is a greater emphasis on mathematical problem solving, requiring multi-step solutions, and students are expected to learn key mathematical formulae by heart.

Students are provided with opportunities for enrichment, including working with The National STEM Centre and United Kingdom Mathematics Trust.



How will this subject help me progress to college/sixth form & university?

Not only is mathematics a fundamental life skill, it is one of the key qualifications required for acceptance onto almost all college or sixth form courses.

To be able to successfully study mathematics beyond GCSE level you should aim to achieve at least a grade 6 by the end of Year 11. A Level mathematics will help you gain access to a wide range of university courses.

What kind of careers could I follow with this subject?

Mathematics is a qualification that underpins a wide range of career choices, and is essential for some. If you choose to study mathematics at university many graduates go on to become accountants, engineers, programmers, statisticians, architects or teachers.



BTEC Music Practice

How will I be assessed?

Assessment

All assessment is through coursework and will be completed as part of the course. There are three components:

Component 1:

- Learners will produce a portfolio of evidence that demonstrates their understanding of four different musical styles
- Learners will create three examples of ideas related to the theme

Component 2:

- Learners will plan and perform a piece in response to a brief

Component 3:

- Learners will respond to a brief as either performers and creators or producers and creators and will produce a cover version of a song in a new style

What kind of careers could I follow with this subject?

BTEC Music Practice is useful for any job that involves communication and expressive skills. Future jobs might include careers in the music industry, music technology, publishing, composing, radio, theatre, performance, entertainment and education.

In the future, creativity is going to be one of the most important and in-demand skills at work (World Economic Forum). When business leaders across the world were surveyed, they voted creativity as the most important workplace skill to help their businesses survive and grow.

This means that the study of creative subjects, like Music, is becoming even more important and relevant to young people and gives you the chance to succeed – whatever your ambitions. At the same time, you will find many opportunities to develop and improve your personal wellbeing both independently and as part of a wider community.

What will I study?

The qualification enables learners to develop their musical skills, such as using musical elements, music creation, performance and music production, and using realistic vocational contexts.

The qualification centres around working within the music sector and focuses on four areas:

- Development of key skills (performing, creating and producing)
- Processes used in the music sector, such as the development of musical ideas and rehearsal technique
- Attitudes that are important in the music sector such as personal management and communication
- Knowledge that is important in the music sector such as musical skills and styles

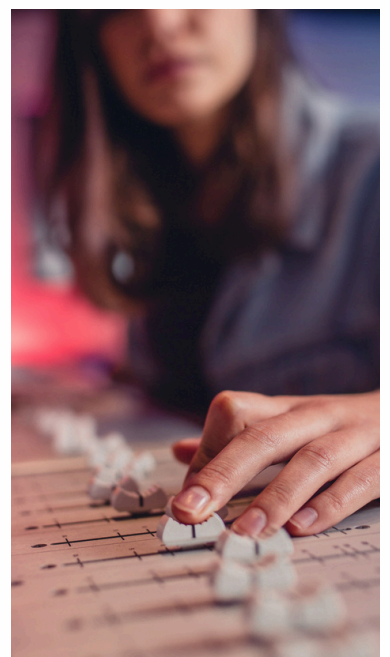
It will be split into three components:

- Exploring music products and styles
- Music skills development
- Responding to a music brief



How will this subject help me progress to college/sixth form & university?

BTEC Music Production is the level 2 version of the music courses currently offered by Burnley College and is good preparation for further musical study, a solid foundation for the A Levels in Music and Music Technology, as well as BTEC National Diplomas in Music, Popular Music and Music Technology and the new vocational A Level in Performing Arts. Music also enables you to develop many skills that employers, colleges and universities are looking for including: creativity, reflection, resilience, confidence, presentation skills and fine motor skills.



GCSE Physical Education

What will I study?

Throughout this course students will be taking part in a wide variety of different sporting activities such as table tennis, netball, athletics, badminton and more. 30% of the course is assessed practically - students opting for GCSE PE must be competent in this area. **Consequently, students must participate in at least one sport outside of College at club level and have a genuine enthusiasm for the subject. Furthermore, attendance at extra-curricular clubs is compulsory.** Students must also complete an in-depth evaluation of how to improve in a sport. Strong links with the theory element of the course will be necessary for a positive mark. Much of the course is assessed on a theory basis which is broken down into two components, which really do demand an interest in this subject. The first, **'Fitness and body systems'**, requires students to focus on applied anatomy and physiology, as well as how we train. The second **'Health and performance'**, focuses on factors underpinning participation and performance in sport.

How will I be assessed?

Students will be studying in line with Government requirements. Our chosen examination board, Pearson Edexcel, indicate that the GCSE course will be a 60% theory/30% practical/10% performance analysis split:

- 60% theory (two examinations at the end of Year 11). Component 1 accounts for 36% of the overall theory grade whilst Component 2 accounts for 24%.
- 30% practical (MUST be in one team sport, one individual sport and one open choice from the sports available). This is Component 3.
- 10% analysis of performance via a controlled written task called a Personal Exercise Programme (PEP). This is Component 4.



How will this subject help me progress to college/sixth form & university?

Students will need to achieve a good pass or above at GCSE to access A Level PE courses. Level 3 BTEC courses. From here students can successfully access sports-related university courses.

What kind of careers could I follow with this subject?

GCSE PE develops transferable and key skills that employers are looking for and can lead to a wide variety of employment opportunities, such as recreational management, leisure activities, coaching, the fitness industry, the armed forces and the civil service. Some examples of careers that link closely to PE are:

- Sports coach/teacher
- Physiotherapist
- Sports psychologist
- Fitness instructor/personal trainer/aerobics instructor
- Health nutritionist

GCSE Religious Education

What will I study?

The Study of Religions, Beliefs, Teachings and Practices.

In this unit, you will learn about:

Christianity – including 'Key Beliefs of Christianity', 'Jesus Christ and Salvation', 'Worship and Festivals' and 'The Role of the Church in the Local and Worldwide Community'.

Islam – including 'Key Beliefs of Islam', 'Authority', 'Worship' and 'Duties and Festivals'.

Thematic Studies

In this unit, you will learn about:

- Relationships and Families – including 'Sex, Marriage and Divorce' and 'Gender Equality'.
- Religion and Life – including 'The Origins and Values of the Universe' and 'The Origins and Value of Human Life'.
- Religion, Crime and Punishment – including 'Religion, Crime and the Causes of Crime' and 'Religion and Punishment'.
- Religion, Peace and Conflict – including 'Attitudes to violence and war', 'Weapons of mass destruction, including nuclear weapons', 'Terrorism' and 'Peace-making'.

How will I be assessed?

At the end of Year 11, you will sit 2 papers.

Paper One: The Study of Religions, Beliefs, Teachings and Practices

This is a written examination that lasts 1 hour 45 minutes. This equates to 50% of the final grade.

Each religion is worth 48 marks. Paper One is out of 96 marks.

Paper Two: Thematic Studies

This is a written examination that lasts 1 hour 45 minutes. This equates to 50% of your final grade.

Each theme is worth 24 marks. Paper Two is out of 96 marks

There will be a variety of questions in the examination papers, ranging in marks from 1 to 12. During your course, your teacher will show you many examples of how you can succeed, as well as you having the opportunity to practise questions frequently to allow you to build confidence. Many of the questions and the content studied will make some links to what you have studied during your Key Stage Three RE lessons.

The assessment will be 100% examination.



How will this subject help me progress to college/sixth form & university?

Religious Studies is a key qualification for acceptance onto many College or 6th form courses. At A-Level, a GCSE in Religious Studies can lead you on to courses not only in Religious Studies or Religious Education, but also in Ethics and Philosophy.

An A-Level in Religious Studies will help you gain access to a variety of university courses and will help you to develop key skills required for university.



What kind of careers could I follow with this subject?

Religious Studies is a qualification that can support a wide range of career paths. Many employers, regardless of the job require a good level of written and verbal communication, something which Religious Studies will give you the opportunity to develop. Many of those who study Religious Studies at university level go on to careers such as teachers, academics, politicians, charity workers, youth workers and solicitors.

GCSE Triple Science

What will I study?

The GCSE Separate Sciences allows students to gain a GCSE in each of the three separate Sciences: Biology, Chemistry and Physics. Students are challenged to explore the science that underpins everyday life by developing a critical approach to scientific evidence and methods. Students will learn the key concepts of biology, chemistry and physics and study how they are applied by professional scientists. There is an emphasis on scientific literacy and scientific numeracy.



How will I be assessed?

Students' progress will be monitored throughout the course using summative and formative assessment methods. If students require support, additional intervention sessions will be offered. Students will be formally assessed via 100% external examinations. Students will have regular opportunities to acquire and develop practical scientific skills throughout the course. There will be series of compulsory investigations that will need to be completed in class and the skills acquired from completing these investigations will be assessed in the examinations. Students will be given regular opportunities in class to practise key exam techniques using literacy and numeracy skills to support examination success.

How will this subject help me progress to college/sixth form & university?

Science is a desirable qualification for acceptance onto most college or sixth form courses and many ask for at least two grade 5s or equivalent. Students who have successfully studied GCSE Separate Sciences are well prepared to go on to study all sciences at A Level and to do so you should aim for at least a grade 6 in your separate Science GCSEs. An A Level qualification in a science will help you gain access to a variety of university courses.

What kind of careers could I follow with this subject?

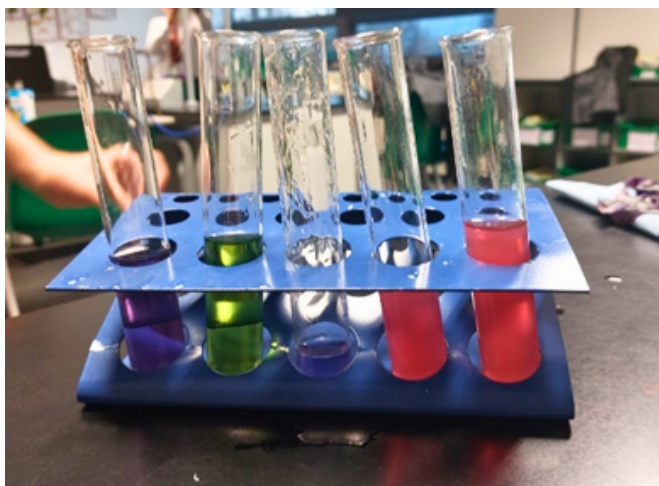
There are a great many careers that are science-based. Some students will specifically train at university for these careers, while others will complete a more general Science degree and then complete their specific training afterwards. Careers include astronomy, engineering, forensic science, medicine, microbiology, nuclear physics, pharmacology, physiotherapy and science teaching.



GCSE Combined Science Trilogy

What will I study?

The GCSE Science course allows students to gain two GCSE grades. Students will follow the AQA GCSE combined Science – Trilogy GCSE. This qualification includes studying a range of biology, chemistry and physics topics and challenges students to show an understanding of scientific numeracy. Students will also be expected to develop their working scientifically skills, with a series of required practicals. Their knowledge in this area will be assessed in the terminal examinations. Students are challenged to explore the science that underpins everyday life by developing a critical approach to scientific evidence and methods.



How will I be assessed?

Students' progress will be monitored throughout the course using summative and formative assessment methods. If students require support, additional intervention sessions will be offered. Students will be formally assessed via 100% external examinations. Students will have regular opportunities to acquire and develop practical scientific skills throughout the course. There will be series of compulsory investigations that will need to be completed in class and the skills acquired from completing these investigations will be assessed in the examinations. Students will be given regular opportunities in class to practise key exam techniques using literacy and numeracy skills to support examination success.

How will this subject help me progress to college/sixth form & university?

Science is a desirable qualification for acceptance onto most college or sixth form courses. Students who have successfully studied GCSE Combined Science – Trilogy are prepared to go on to study all sciences at A Level and to do so you should aim for at least a grade 6-6 in your GCSEs. Achieving an A Level grade in one of the sciences will give you access to studying a degree in one of the sciences. It can also be used for acceptance on to Technical or Vocational qualifications such as Applied Science, Healthcare Science or T Level Science.

What kind of careers could I follow with this subject?

There are a great many careers that are science-based. Some students will specifically train at university for these careers, while others will complete a more general Science degree and then complete their specific training afterwards. Careers include astronomy, engineering, forensic science, medicine, microbiology, nuclear physics, pharmacology, physiotherapy and science teaching.



Modern Foreign Languages

GCSE French/Spanish

What will I study?

Theme 1 - People and Lifestyle

- Identity and Relationships with others
- Healthy living and Lifestyle
- Education and Work

Theme 2 - Popular Culture

- Free-time activities
- Customs, Festivals and Celebrations
- Celebrity Culture

Theme 3 - Communication and the World around us

- Travel and Tourism, including Places of interest
- Media and Technology
- The Environment and Where people live

The aims of the courses will be to enable students to develop:

- an understanding of French/Spanish in a variety of contexts
- a knowledge of vocabulary and structures
- transferable language learning skills
- the ability to communicate effectively
- an awareness and understanding of countries and communities where French / Spanish is spoken.

Shuttleworth College encourages all students to continue to study a language to GCSE. In years 7, 8 and 9, a sound foundation has already been laid in French OR Spanish lessons. Most students are already some way along the road to a good GCSE grade. A languages GCSE will allow students to develop communication skills, it broadens their understanding of other cultures and gives them the tools to learn additional languages in the future.

How will I be assessed?

- GCSE French / Spanish is a *linear* course, which means there are no controlled assessments.
- You will be examined in May/June of Year 11 in the following skills: Listening and responding, Speaking, Reading and Responding and Writing.
- Each skill is worth 25% of the final GCSE Grade.
- You will be entered into either Foundation tier (Grades 1-5) or Higher tier (Grades 4-9).

What kind of careers could I follow with this subject?

A foreign language qualification will allow you to use that language in the workplace (in a multinational industry for example) or to travel to work abroad. Workers with foreign language qualifications are sought after and valued in a variety of fields of employment.

A few examples include:

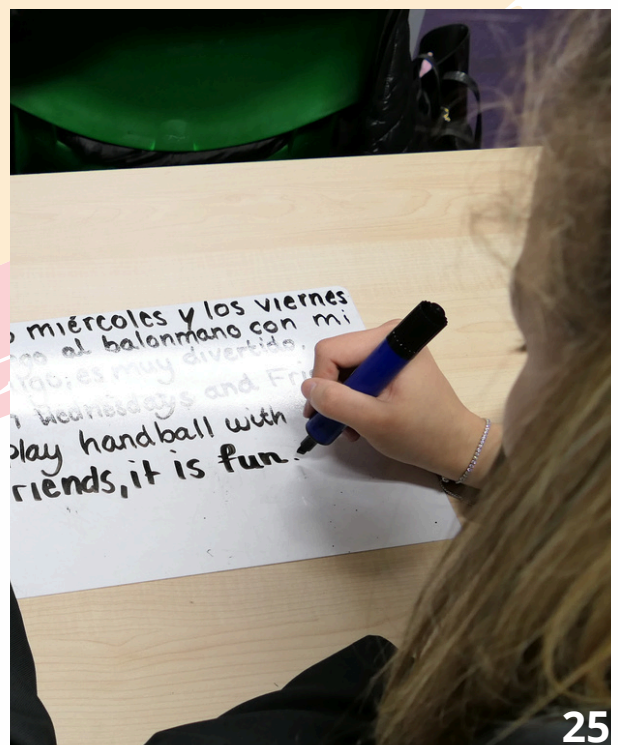
- Politics and Diplomacy
- Legal Profession / Law
- Public Services (Police, Army)
- Education (Primary, Secondary and Further)
- Sales and Marketing
- Engineering
- International Aid and Development
- Tourism
- Transport



How will this subject help me progress to college/sixth form & university?

A GCSE in a language is required for students to gain the English Baccalaureate, or the E-Bacc, which is a government measure aimed at ensuring that all secondary school students study academic subjects. Achieving the E-Bacc may become a requirement to gain access to certain universities or courses in the near future.

Students wishing to pursue their studies of French / Spanish to A Level will need to have achieved a grade 6 at GCSE and will need a firm understanding of the grammar of the language. This, along with the required A levels, will allow students to pursue languages at university in the future, either as a main subject or combined with many different combinations of subjects.



GCSE Statistics



What will I study?

GCSE Statistics is the branch of mathematics that focusses on collecting, processing, representing and analysing data as well as looking at probability. You will learn about the statistical enquiry cycle and statistical methods. You learn what data to collect, what calculations you can work out, how you might present the data in diagrams and what they all mean.

How will I be assessed?

There are two tiers of entry: Foundation (grades 1-5) and Higher (grades 4-9). Students will continue to be formally assessed entirely through external examinations at the end of Year 11 in Statistics via two exams with equal size and weighting towards their final grade. Students will be regularly assessed in the classroom to monitor progress, and given regular opportunities practise key skills to support examination performance.



How will this subject help me progress to college/sixth form & university?

Studying GCSE Statistics ensures students develop confidence with statistical techniques which can open many doors in future careers. Some units of work in A Level Mathematics and Further Mathematics are focussed on statistics. It can also be beneficial in other Level 3 qualifications such as A Levels in Biology, Economics, Geography, Psychology and Sociology, and vocational qualifications such as BTEC in Business or Applied Science.

What kind of careers could I follow with this subject?

Statistics is a qualification that underpins a wide range of career choices, and is essential for some. If you choose to study mathematics and statistics at university many graduates go on to become accountants, engineers, programmers, statisticians, architects or teachers. Statistics is helpful in any career where quantitative methods are used.



GCSE Photography

What can I study?

Photography

This will suit you if:

- you enjoy using computers and have an interest in using editing software
- you enjoy learning about artists, photographers and genres
- You have an interest in the wider world (social/political/current affairs/personal themes)

What you will learn

- How to use a Digital camera (learning how to use various modes and effects)
- Key principles of Photography (composition/colour/light/space)
- About the work of other Photographers, Artists and Art Movements
- How to edit your photographs using digital and practical editing skills
- How to decode an image and create your own personal portfolio of work

Key aspects of the course:

- written annotation is a key element of the Photography course and this must be mastered by students in order to secure the high-grade bands
- all students are required to create a digital portfolio that document their journey through their GCSE projects
- students are required to demonstrate enthusiasm and dedication as they are expected to commit significant time out of school hours (home learning and studio time after school) to finish tasks



How will I be assessed?

Unit 1 – NEA - Portfolio of work - 60% of the final GCSE grade.

This consists of all the work completed in Year 10 and in the Autumn Term of Year 11.

Unit 2 – NEA - Externally set assignment - 40% of the final GCSE grade.

A final exam project which begins in January of Year 11. An 11 week preparatory period concludes in a 10 hour exam in which pupils must produce a previously researched and planned final artwork without assistance.

How will this subject help me progress to college/sixth form & university? What kind of careers could I follow with this subject?

All GCSE Art & Design courses will give you the opportunity to pursue college diplomas or A Levels in a range of Art and Design based subjects. This will then lead to an Art Foundation course (Pre Bachelor of Arts) and then a degree course at University which will take 3 to 4 years to complete. All the courses above offer you opportunities to interpret ideas visually whilst educating you about the role of Art and Design in society. They cover some aspects of skills used in the fine art, textile, fashion, three-dimensional design and graphics industries. Art GCSEs are particularly important if you are interested in careers such as fashion, photography, television and film, advertising, theatre, illustration, interior/commercial design and architecture as well as careers where imagination and presentation skills are required.

