

Welcome to our



SHUTTLEWORTH 

COLLEGE

Open Evening

2023

Thursday 19th October

5:30pm - 8.00pm

Think BIG 

CHASE
Dreams 

SUCCEED
TOGETHER 



www.shuttleworthcollege.org



High aspirations for all students

Best results yet - in English Language, English Literature, Drama, Music and Media Studies

Top grades in all our subjects

Careers links & experiences e.g. guest lectures, trips for all our subjects

Creativity and imagination developed in all subjects

Think BIG in English & Creative Communications

**School productions – this year's production is 'Oliver!' at Padiham Town Hall,
also Winter Wonderland and Summer Showcase performances in school**

The Ocean at the End of the Lane at the Lowry

Poetry Live! at Bridgewater Hall

MediaCity trip

Visiting author – Nathan Parker

Lancashire Book of the Year school

**Enrichment – drama club, choir, band, podcast, music technology, creative
writing, media studies**

CHASE
Dreams

**in English & Creative
Communications**

Collaboration with FE/HE – masterclasses with Nelson & Colne College

Peripatetic music lessons for a range of instruments

Developing key skills for employment and success

Focus on developing oracy skills

Developing media literacy for a greater understanding of our world

SUCCEED

TOGETHER

in English & Creative Communications

- **Students encouraged to develop problem solving skills - serve them in everyday life (resilience)**
- **Staff promote independence**
- **Computational and logical thinking**
- **Creativity projects**

Think BIG in Maths & Computing

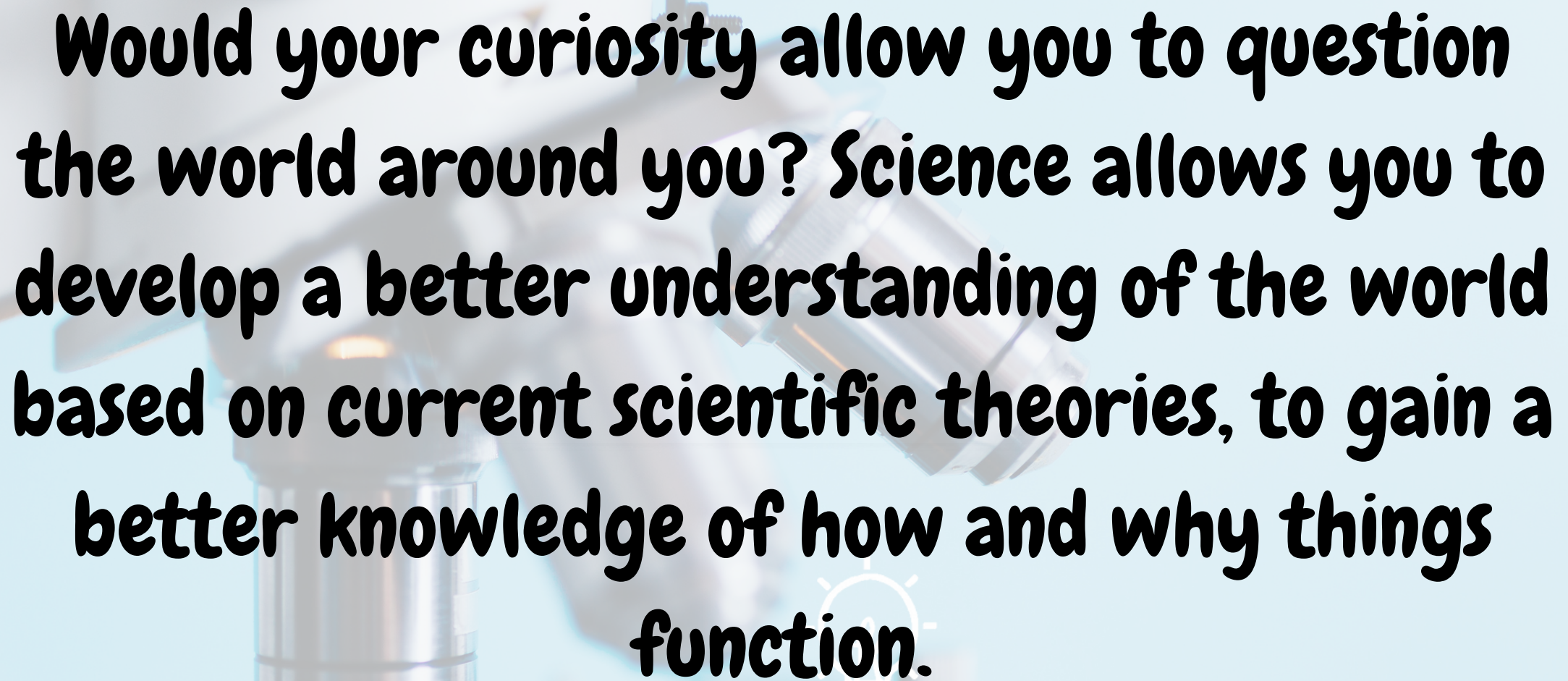
- **Students given the opportunity to take GCSE Statistics**
- **Robotics Club**
- **Using software used by professionals**
- **Coding enrichment club**

in Maths & Computing

CHASE
Dreams

- **GCSE Maths Grades 9-4 and 9-5 above the national average!**
- **UK Maths Challenge entered in Years 7-9, with our best results ever in 2023. (Sonny Whittaker achieved the Gold award)**
- **23% of iMedia students achieved the highest grades (9-7) in 2023.**
- **GCSE Statistics Grades 9-7 above the national average!**

in Maths & Computing TOGETHER



Would your curiosity allow you to question the world around you? Science allows you to develop a better understanding of the world based on current scientific theories, to gain a better knowledge of how and why things function.

Think BIG in Science

Could you be the next **Marie Curie, Steven Hawking, Rosalind Franklin** or **Nikola Tesla**?
Could you be the inventor of scientific innovations for future generations? Or discover new knowledge that changes the way we think about the world?

in Science

CHASE
Dreams

Could you use your scientific understanding to work together to find solutions to problems using practical skills? Studying science allows you to think analytically by making observations, predicting outcomes and forming conclusions through the scientific method.



in Science TOGETHER

Considering how power has influenced the lives of people through religion, the monarchy and governments.



Think BIG in Humanities

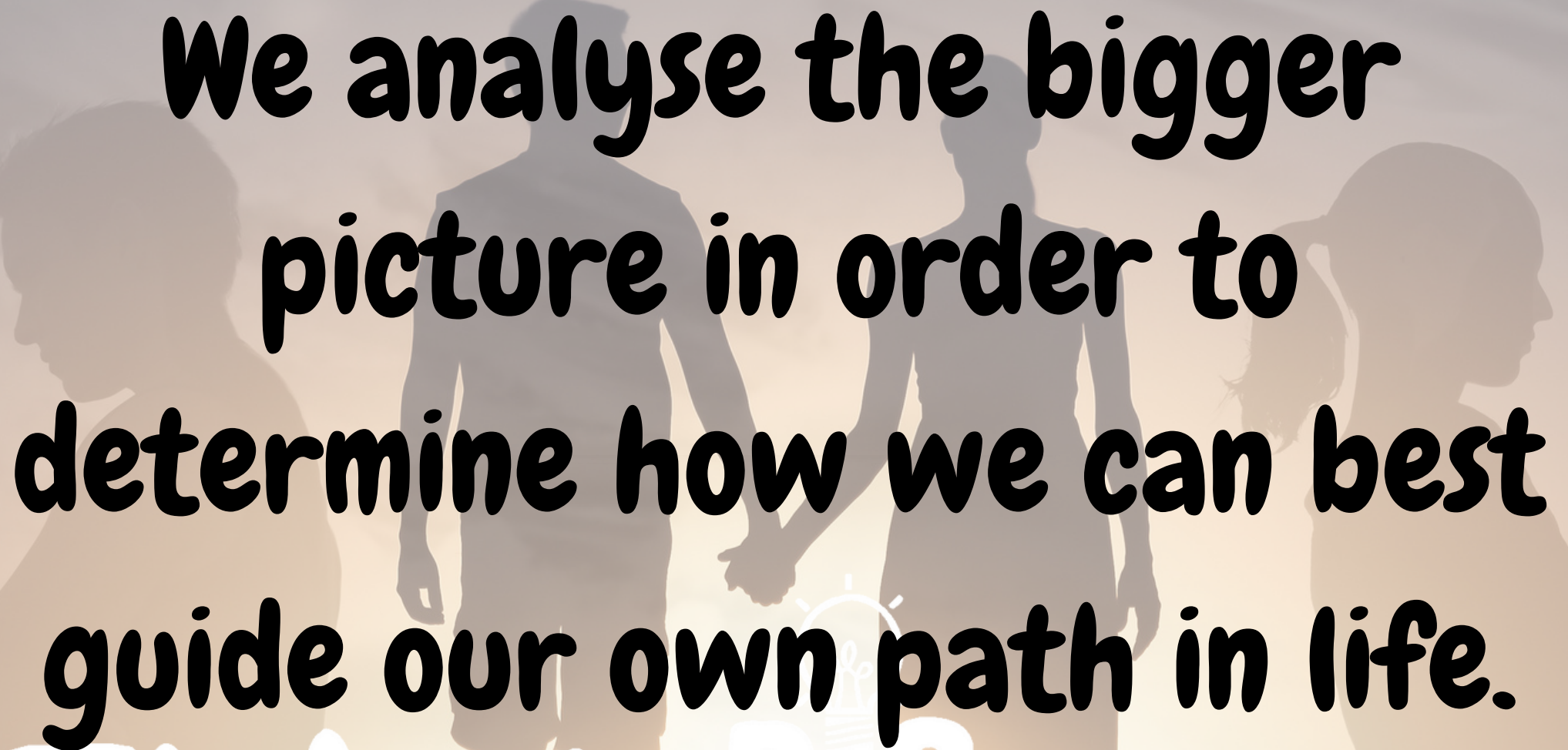
We aim to know and understand the world so that we can contribute to and achieve brighter futures in our own communities and those on other continents.

in Humanities

CHASE
Dreams

Respect for all communities is imperative in studying RE, where people with different religions, experiences and belief systems can talk openly and honestly.

in Humanities **SUCCEED TOGETHER**



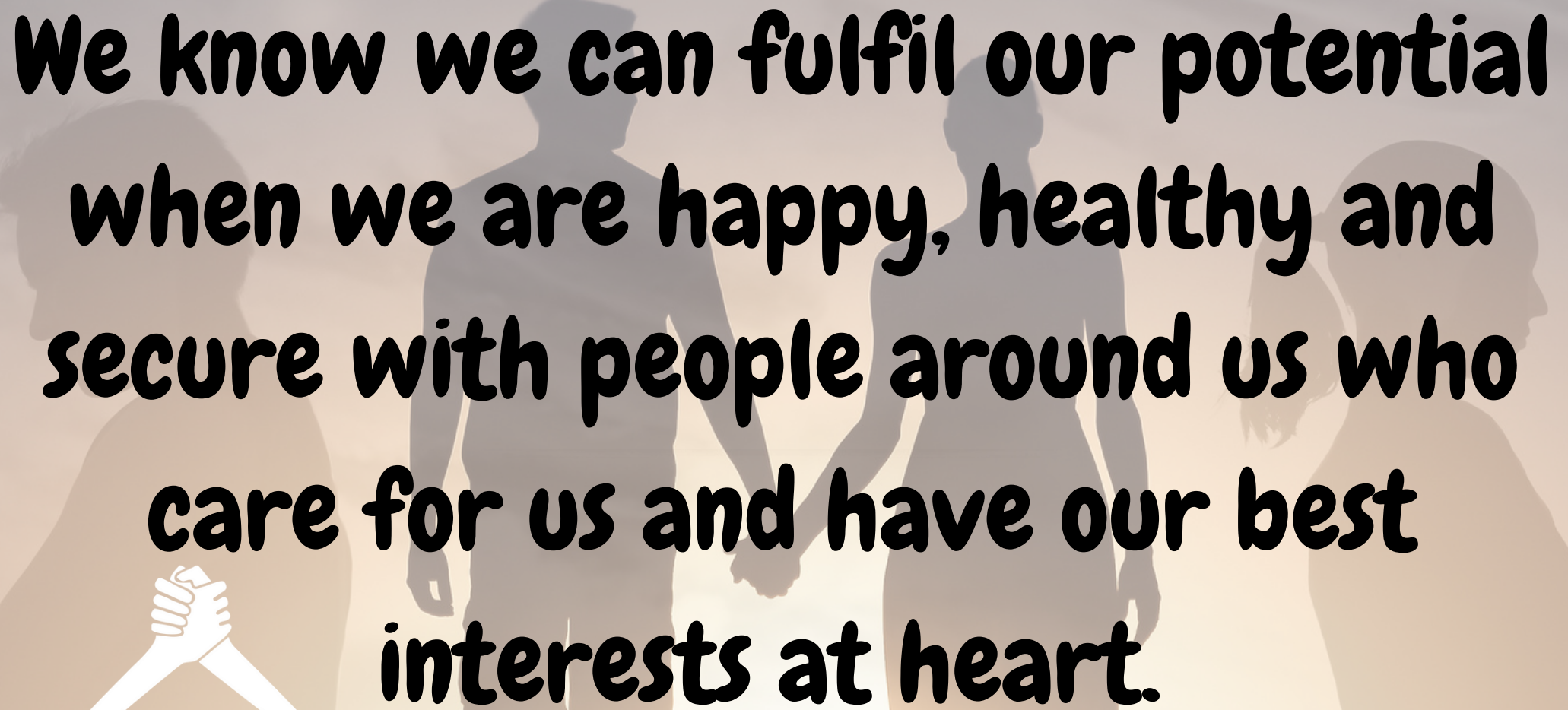
We analyse the bigger picture in order to determine how we can best guide our own path in life.

Think BIG in PSHE

We aim to break down
barriers to our success in the
future so that our dreams
come true.

in PSHE

CHASE
Dreams

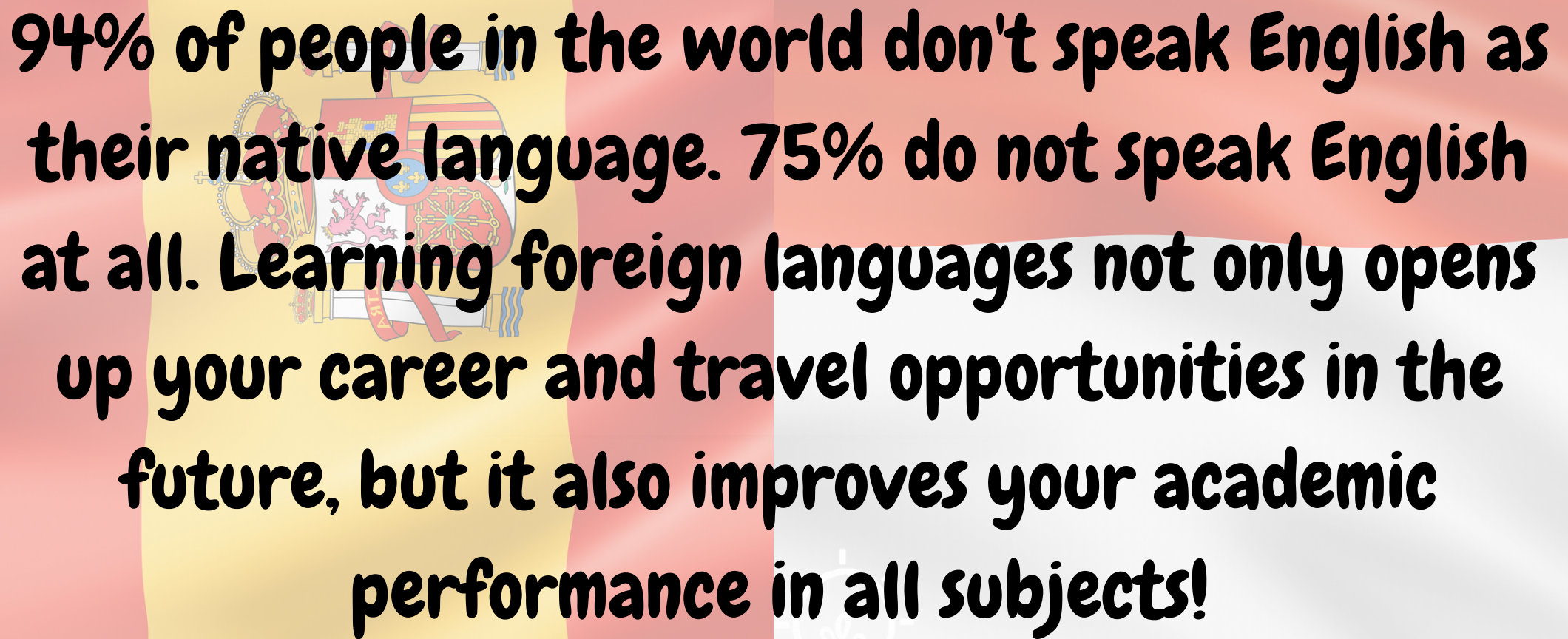


**We know we can fulfil our potential
when we are happy, healthy and
secure with people around us who
care for us and have our best
interests at heart.**



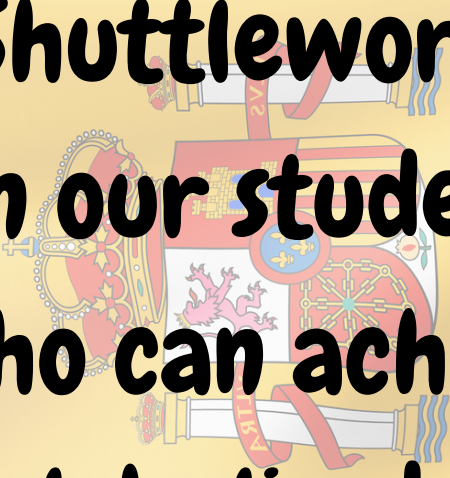
**SUCCEED
TOGETHER**

in PSHE

The background features a vertical split. The left side is yellow and contains a faint, stylized coat of arms with a crown and a shield. The right side is white and contains a faint lightbulb icon. The overall background is framed by red and yellow horizontal stripes at the top and bottom.

94% of people in the world don't speak English as their native language. 75% do not speak English at all. Learning foreign languages not only opens up your career and travel opportunities in the future, but it also improves your academic performance in all subjects!

Think BIG in MFL

The crest of Shuttleworth College is located on the left side of the slide. It features a shield with a red lion, a blue cross, and a red banner with the word 'VIR' on it. The shield is surrounded by a decorative border.

At Shuttleworth College, it is our mission to turn our students into citizens of the world who can achieve their full potential in a globalised economy. We aim to foster confidence, resilience and a curiosity about the world beyond their local area.

in MFL


The logo for CHASE Dreams is located in the bottom right corner. It consists of a white cloud shape with the word 'CHASE' in red capital letters and 'Dreams' in red cursive script below it.

**CHASE
*Dreams***



At Shuttleworth, students in year 7 are given the choice to learn either French or Spanish. Students study their chosen language with their form group throughout Key Stage 3. We also offer a student enrichment language club and school trips to Paris, Barcelona and Madrid!

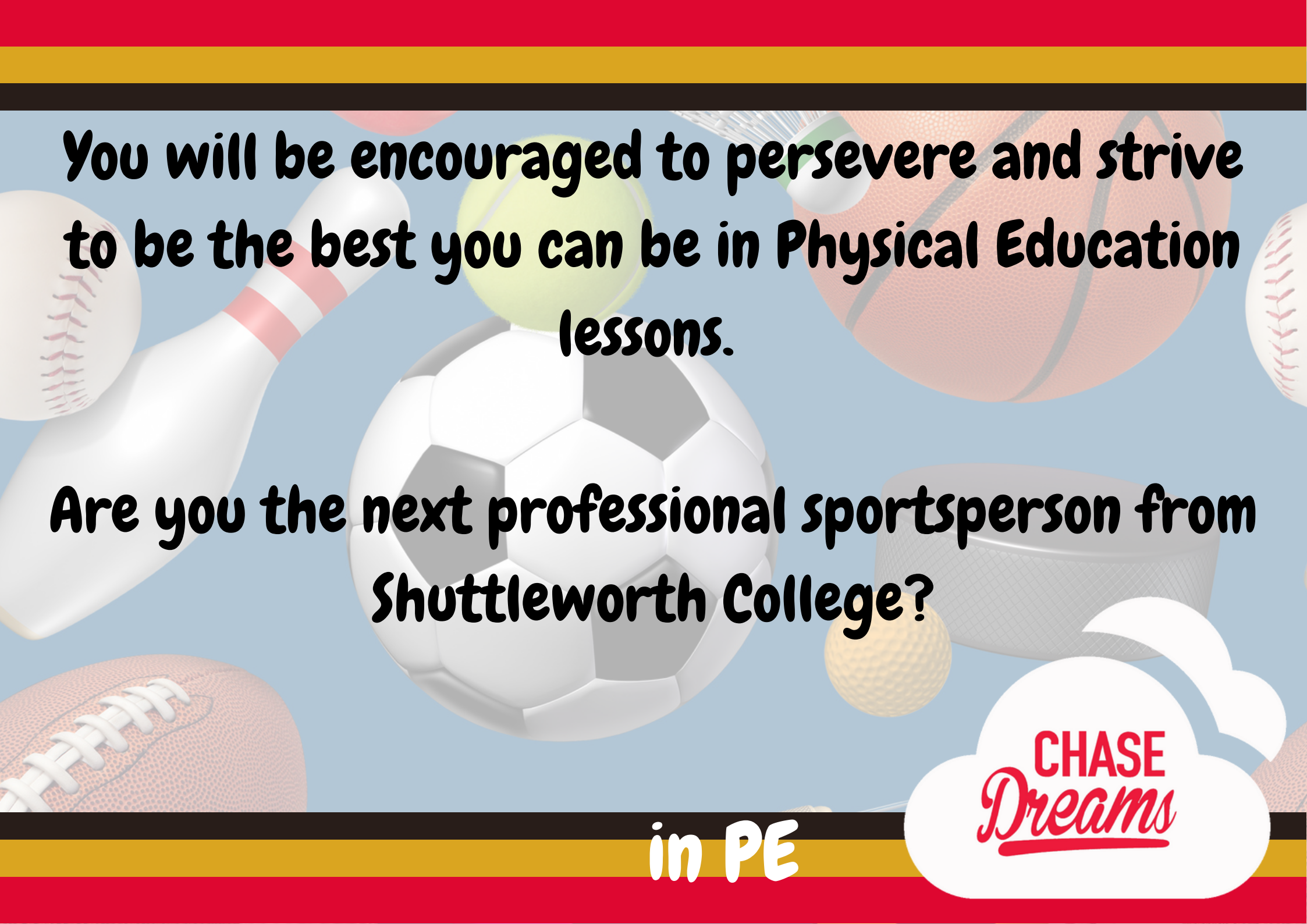
**SUCCEED
TOGETHER in MFL**



Our Physical Education curriculum is broad and offers all students an opportunities to try something new. Current sports and activities on offer in Year 7 are: football, netball, table tennis, dance, rounders, outdoor and adventurous activities (OAA), athletics and cricket.

Think BIG

in PE

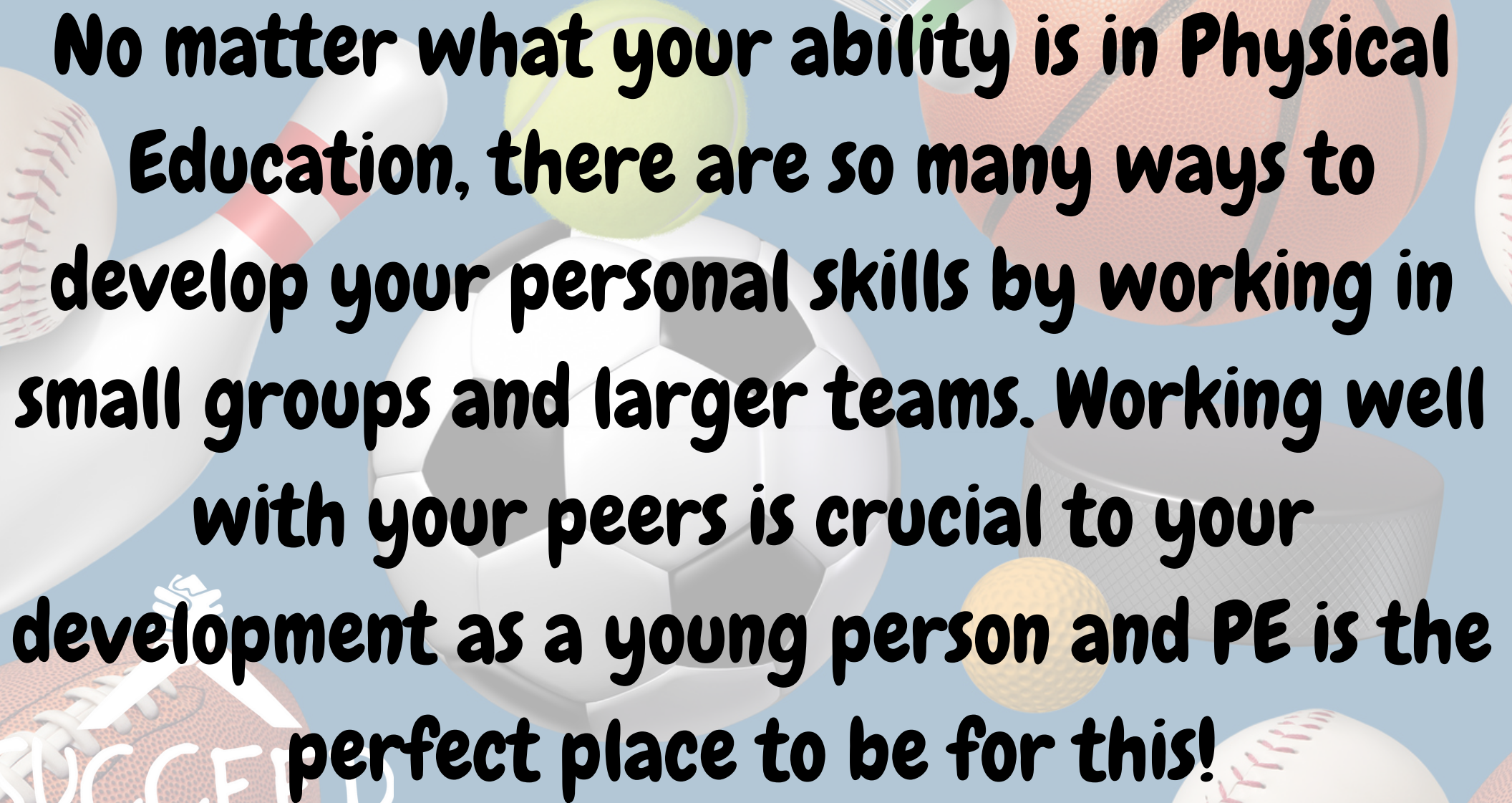


You will be encouraged to persevere and strive to be the best you can be in Physical Education lessons.

Are you the next professional sportsperson from Shuttleworth College?

in PE

CHASE
Dreams



No matter what your ability is in Physical Education, there are so many ways to develop your personal skills by working in small groups and larger teams. Working well with your peers is crucial to your development as a young person and PE is the perfect place to be for this!

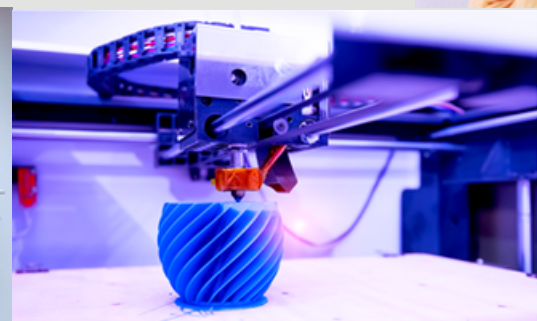
SUCCEED
TOGETHER in PE

Steve Jobs once said “The people who are crazy enough to think they can change the world are the ones that do.”

In the Creative Technologies we want you to **stretch yourself...**

You are the world famous artists, designers, chefs, nutritionists and engineers **of the future!**

Embrace the huge variety of techniques and processes you are introduced to and push yourself to **create** and **innovate!**



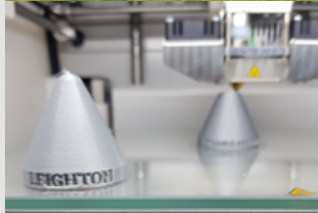
Think BIG

in Creative
Technology

In **CREATE** Club you can develop skills and work with others on projects you won't cover in lessons.

In **ECO** Club you can work with others to improve the sustainability of our school and community.

Our **Creative Leaders** attend training sessions and help to deliver workshops in our own school and with in our local community!



We will be further developing links with **local businesses** and **technological companies** in the next academic year to provide more real world opportunities to see design & technology in action.

In Creative Technologies we want to help you develop all the **skills** and **knowledge** you need to **chase your dreams** through many different experiences...

CHASE
Dreams

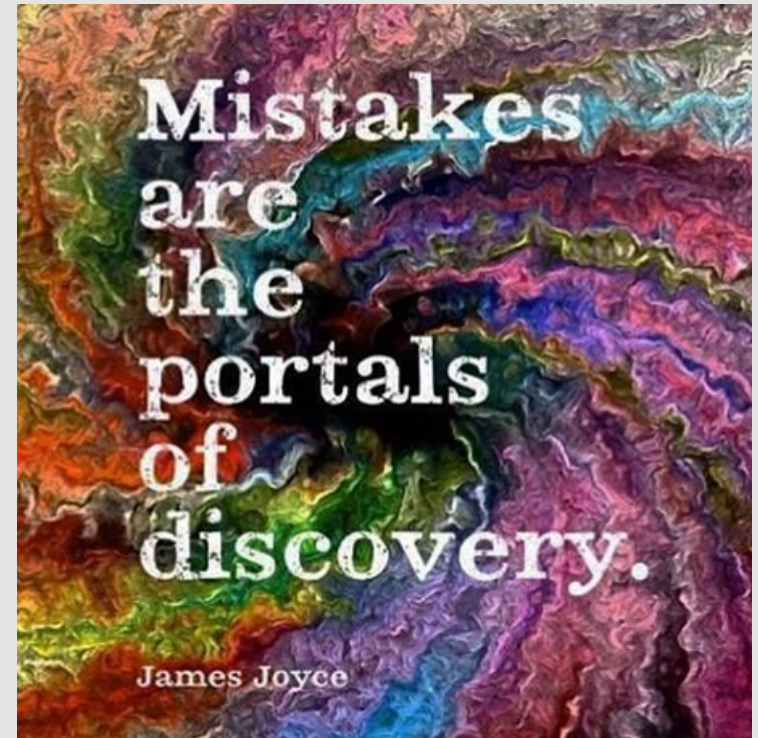
in Creative Technology

James Dyson once said...

'Enjoy failure and learn from it... you can never learn from success.'

In the Creative Technologies, we aim for everyone to succeed; be it by embracing our mistakes and applying what we discover to improve our outcomes, or working as a team to inspire and support one another.

Every day, our team and your peers are here to help you succeed in everything you do!



SUCCEED
TOGETHER

in Creative Technology

SUPPORTING EAL STUDENTS

At Shuttleworth College we recognise the great potential of our EAL students and we aim to ensure this is realised beyond school. Teachers are trained to maximise learning time in lessons to ensure success in the future.

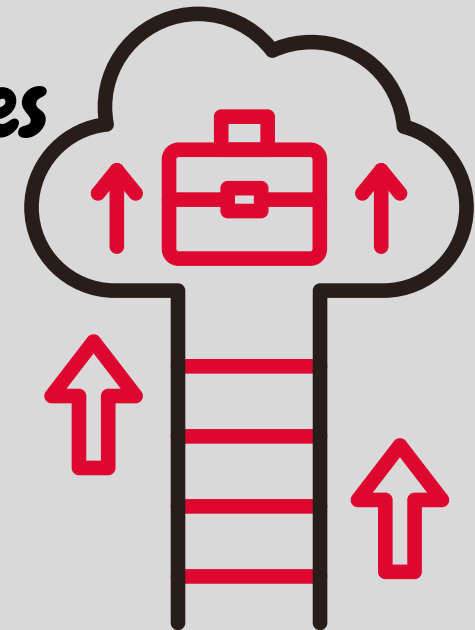
SUPPORTING STAFF AT COLLEGE

**Teaching Assistants at Shuttleworth College
dedicate their time to the development of the
whole child.**

**Our Teaching Assistants help to break down
barriers, leading to happy, successful learners who
are valued members of the school community.**

- Meeting the Gatsby Benchmarks
- Understanding the range of future opportunities
- Understanding the range of options for further study and training
- Knowing about local employment opportunities
- Developing skills and knowledge
- Fostering confidence in lifelong learning and development
- Personal Guidance

CAREERS
AT **SHUTTLEWORTH** COLLEGE



Careers highlights include:

- Meeting employers and employees
- Trips, visits and speakers
- Careers fair
- BBC talks
- Year 10 ASPIRE week 2023: 20+ trips, college visits, university visits, employability tasks, skills development and exploring future possibilities.

CAREERS

AT

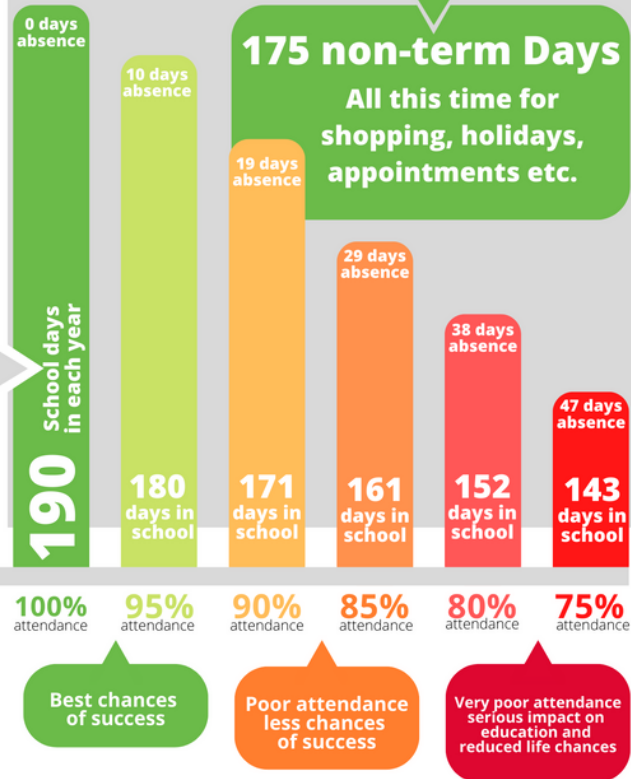
SHUTTLEWORTH
COLLEGE



ATTENDANCE

Good attendance at SHUTTLEWORTH COLLEGE means...
...being in school at least 95% of the time (180 - 190 days)

365 DAYS IN A CALENDAR YEAR



DID YOU KNOW? A two week holiday in term time means that the highest attendance you can achieve is 94.7%

ATTENDANCE LEGAL PROCEDURES

Parents of a registered pupil whose child fails to attend school regularly are committing an offence under section 444(1) Education Act 1996.

Stage 1

A pupil has had 5 school days (10 sessions AM or PM) lost to unauthorised absence during the current term or 7 school days (14 sessions AM or PM) in 2 consecutive terms.

School warning notice sent to parents/guardians with parental responsibility

Stage 2

Parents are to attend an attendance meeting and attendance contact is signed. Attendance is monitored for 3 weeks. The pupils should have 100% attendance over the next 3 weeks.

There are further unauthorised absences during the 3 week monitoring period

Stage 3

A fixed penalty notice of £120 per parent, per pupil will be issued.

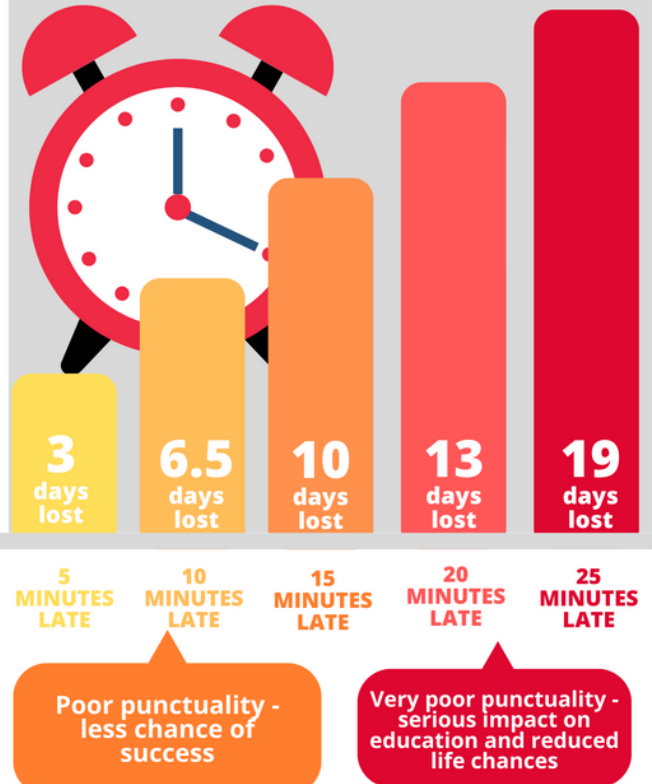
The pupils attendance continues to not improve and falls below 63%

Stage 4

A PDR (Prosecution determination report) will be issued that will result in a court summons with regards to the pupils poor attendance.

Good time keeping at SHUTTLEWORTH COLLEGE means...
...being in school on time, every day, ready to learn.

GOOD PUNCTUALITY MATTERS



DID YOU KNOW? If you are 15 minutes late each day you will have missed two full weeks of school in one year?

College Culture - The 4 Ws

WE
work hard and
are productive



- Students pay deliberate attention.
- 100% effort all of the time.
- Never cause a distraction to others.
- Sit up straight.
- No equipment in hands when listening.

resilience

WE
are respectful



- Use a respectful tone.
- Listen to staff and peers.
- Treat the building and equipment with care.

resilience

WE
follow directions
the first time



- Directions taken first time from all adults.
- Adhere to the routines of the school.
- No time is wasted.

resilience

WE
are safe
Community

- We keep our hands & feet to ourselves.
- We make others feel safe.

BEHAVIOUR

Learning Culture - The 4 Ws

WE expect our students to pay deliberate attention to the teacher so that we can all learn and be productive.

WE expect our students to focus and work in silence, when directed to; it allows everyone to concentrate and focus on the learning.

WE expect our students not to have equipment in their hands when the teacher is talking as it causes an unnecessary distraction to themselves and others.

WE expect our students to sit up straight in their chair so they can face the teacher in a respectful manner and complete work.

Our Consequence System



Chance

YOU have not met the expectations of the 4Ws and now you will be given a chance to make the right choice.



Change

YOU must change your behaviour to meet the college expectations. 30 minute detention.



Consequence

YOUR repeated choices have resulted in you having to face a consequence. Removal from lesson and 1 hour detention.

B E H A V I O U R

At Shuttleworth College we are rewarded for embodying our values

We have high expectations to reach our full potential.



I can show this school value by trying my hardest in all my lessons.

We are well-disciplined and respectful to our school community.



I can show this school value by showing respect to all around me.

We achieve our future purpose when we unite.



I can show this school value by considering others.

We overcome challenges together.



I can show this school value by working well as part of team and not giving up!

We give our best every day and never stop aiming high.



I can show this school value by always aiming high.



Students can earn reward points in a variety of ways! They aren't just earned in the classroom - they can be for random acts of kindness, excellent homework, and 100% attendance. All staff allocate rewards points throughout the week.

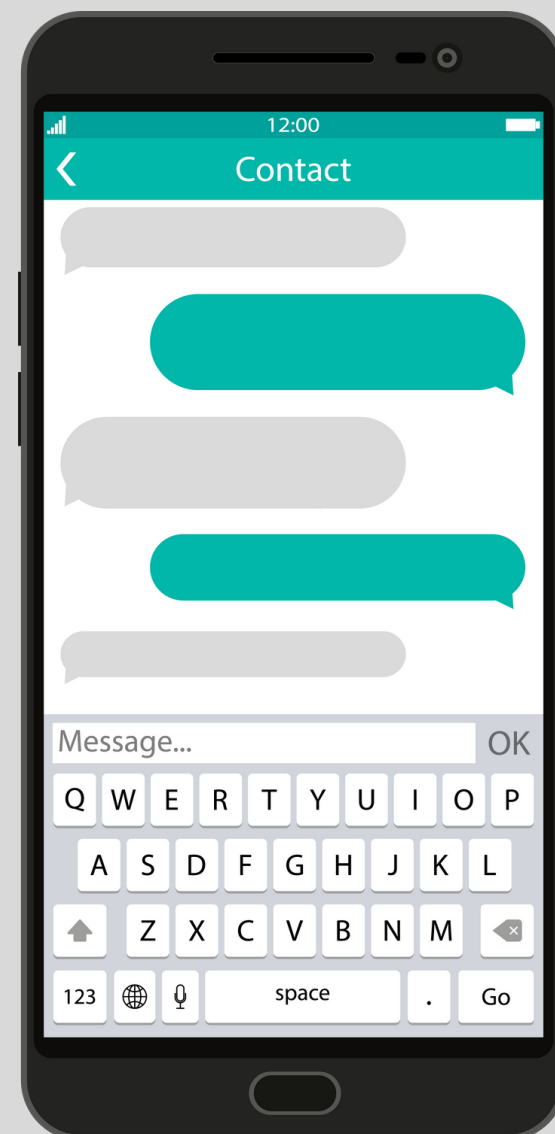
R E W A R D S



REWARDS

Each day, the student with the most reward points from each year group will receive a text message home informing parents/carers that they are Shuttleworth Star of the Day.

Any member of staff can request a positive text message to be sent home. This can be issued for many different reasons at the teachers' discretion, but not limited to: excellent work, displaying school values or fantastic participation in lesson.



STUDENT VOICE

YOUR VOICE MATTERS



HAVE YOUR SAY!



WE CONSIDER &
GIVE FEEDBACK TO YOU



WE ANALYSE
WHAT YOU
HAVE TO SAY



SEND STUDENTS

Supporting Students at Shuttleworth



At Shuttleworth we work with students and their families to overcome barriers they could be facing to learning. This happens in and out of the classroom through quality in class support, medical support and a broad range of Special Educational Needs and Wellbeing based needs interventions.

Ask staff in the library if you have any questions.



STUDENT

EXTRACURRICULAR

Week A

MONDAY	TUESDAY	WEDNESDAY	THURSDAY	FRIDAY
DANCE 221 ALL YEARS	HOMEWORK CLUB LIBRARY YEAR 7 ONLY	FOOTBALL 3G YEAR 9	MUSIC TECH CLUB MUSIC ROOM ALL YEARS	GCSE PE & SPORTS SCIENCE HOMEWORK CLUB 221
NETBALL MUGA ALL YEARS	CREATIVE WRITING CLUB 207 ALL YEARS	TABLE TENNIS 221 YEARS 7 & 9		
FITNESS CLUB FITNESS SUITE YEAR 11 ONLY		GIRLS FOOTBALL 3G ALL YEARS		
HOMEWORK CLUB LIBRARY YEAR 7 ONLY		UKMT CLUB 328 YEARS 9 & 10		
MUSIC CATCH UP MUSIC ROOM YEAR 11 ONLY		ROBOTICS CLUB 324 YEARS 7 & 8		
BAND NIGHT MUSIC ROOM ALL YEARS (ANYONE WHO CAN PLAY)		CHOIR MUSIC ROOM ALL YEARS		
DEBATE CLUB 202 ALL YEARS		BOOK TO FILM CLUB 204 ALL YEARS		
CREATE ART ROOM ALL YEARS		PIZZA REVISION 325 YEAR 11 ONLY 4:45PM FINISH		
3D PRINTING TECHNOLOGY ALL YEARS				
DRAMA CLUB DRAMA STUDIO ALL YEARS				

Skills Volunteering Physical

Week B

MONDAY	TUESDAY	WEDNESDAY	THURSDAY	FRIDAY
DANCE 221 ALL YEARS	HOMEWORK CLUB LIBRARY YEAR 7 ONLY	FOOTBALL 3G YEAR 9	MUSIC TECH CLUB MUSIC ROOM ALL YEARS	GCSE PE & SPORTS SCIENCE HOMEWORK CLUB 221
NETBALL MUGA ALL YEARS	CREATIVE WRITING CLUB 207 ALL YEARS	TABLE TENNIS 221 YEARS 7 & 9	FOOTBALL 3G YEARS 7 & 8	
FITNESS CLUB FITNESS SUITE YEARS 7 & 9		GIRLS FOOTBALL 3G ALL YEARS	ROBOTICS CLUB 324 YEARS 7 & 8	
HOMEWORK CLUB LIBRARY YEAR 7 ONLY		UKMT CLUB 328 YEARS 9 & 10	MANDARIN 231 ALL YEARS	
MUSIC CATCH UP MUSIC ROOM YEAR 11 ONLY		ROBOTICS CLUB 324 YEARS 7 & 8		
BAND NIGHT MUSIC ROOM ALL YEARS (ANYONE WHO CAN PLAY)		CHOIR MUSIC ROOM ALL YEARS		
DEBATE CLUB 202 ALL YEARS		BOOK TO FILM CLUB 204 ALL YEARS		
CREATE ART ROOM ALL YEARS		PIZZA REVISION 325 YEAR 11 ONLY 4:45PM FINISH		
3D PRINTING TECHNOLOGY ALL YEARS				
DRAMA CLUB DRAMA STUDIO ALL YEARS				

Skills Volunteering Physical

London

Runs every two years around February half term

This weekend will include various excursions and sightseeing in London. Students will have the opportunity to watch a show on the West End. Transport via train mainly, and then on foot and public transport around London.



Barcelona

Yearly trip running in the summer term

This is a sports trip with varying competitions and a trip to a football stadium and a waterpark. Transport to Barcelona is via coach / ferry. This is an overnight journey there and back.



Madrid

Yearly trip running in the summer term

A cultural experience for the students, with a trip to a theme park included. Transport via flights and coach when in Madrid.



**Newby Wiske
Nov 2023 - Year 11**

**Outdoor activities and revision
sessions. Transport via coach;**

**Newby Wiske is in North
Yorkshire.**



**Newby Wiske
June 2024 - Year 7**

**Outdoor activities and team
building. Transport via coach;
Newby Wiske is in North
Yorkshire.**

EuroDisney

**Yearly trip running late
November**

**This trip includes Paris and
EuroDisney. Transport to Paris
is via coach and then the
Eurostar/ferry depending on
availability and prices.**

