

**SHUTTLEWORTH**

COLLEGE

# NEWSLETTER

## HEADTEACHER MESSAGE

Dear Families,

It has been a very busy term at Shuttleworth again! We have lots to be proud of and celebrate in this newsletter.

At the end of November there was a wonderful trip to Paris, as well as a university trip for some of our budding mathematicians. Student leadership has developed with gusto; we have appointed this year's ambassadors in Years 7-10.



Shuttleworth's community spirit has shone through a charity project led by a Year 9 student, Ebony Wilkinson, who has raised money for Breast Cancer Now. Our Key Stage 3 forms have been learning BSL (British Sign Language) and talking about inclusivity.

This week has seen our wonderful students' success being celebrated in rewards assemblies for all year groups. Key Stage 3 students performed a BSL rendition of Rudolph the Red-Nosed Reindeer in unison. Our Winter Showcase was superb; these events really embody the culture and spirit of the school. Seeing staff and students working alongside each other to produce a wonderful celebration of the arts and sharing successes in assemblies has been the happiest part of the term for me. Watching the pride from adults about what students can achieve and produce is wonderful. It's a joy to see how thrilled and proud the children are in our acknowledgement of their achievements. It really is the reason we all do what we do!

Have a wonderful, safe and relaxing break over Christmas, and we will see all students on Monday 8th January 2024.

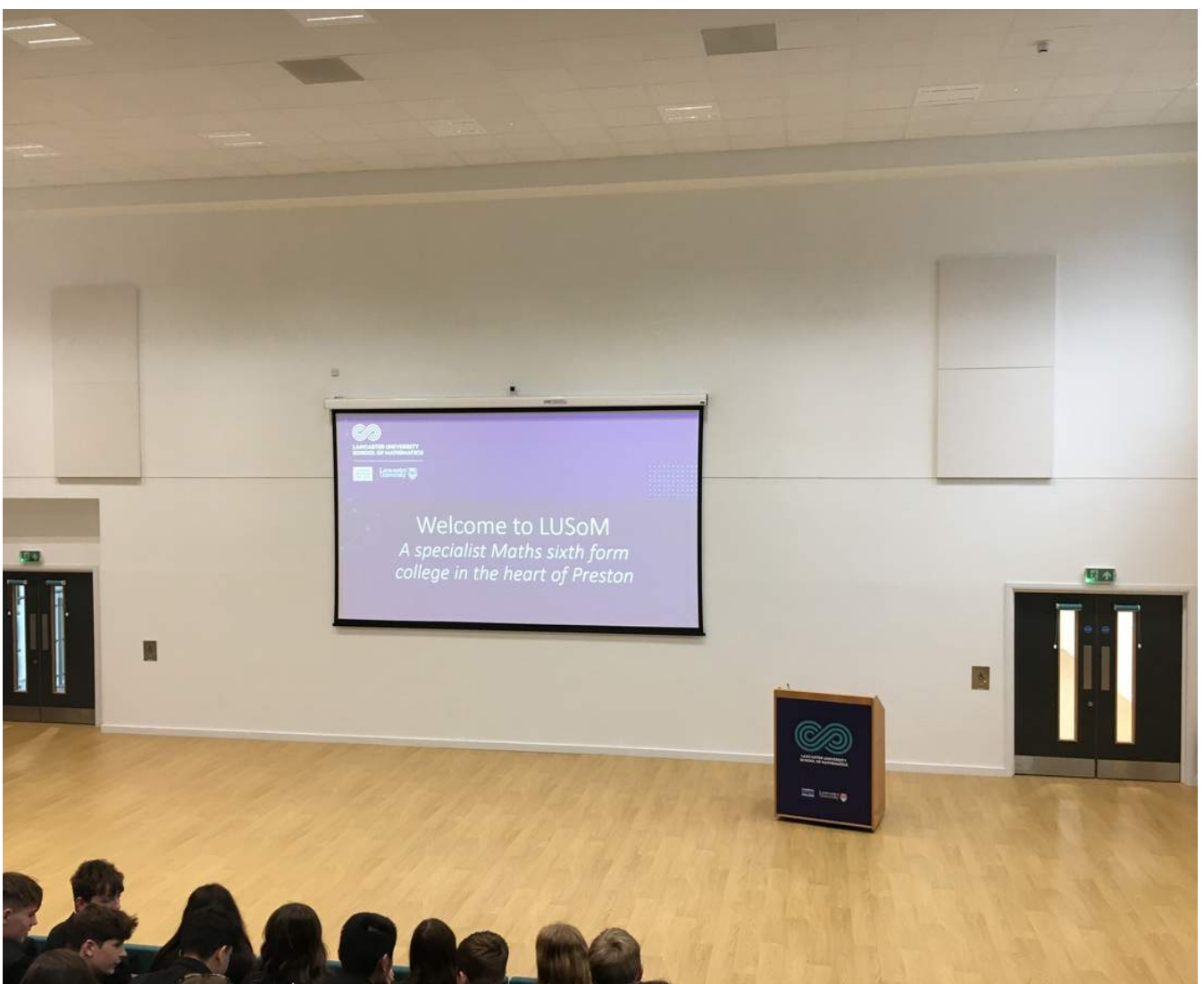
*R. England*

# NEWS & EVENTS

## LUSoM TRIP

In November, 29 Year 10 students visited Lancaster University School of Mathematics (LUSoM), in Preston. This is a specialist sixth form, run in partnership by Lancaster University and Cardinal Newman College, where all students study A Level Maths and a range of other maths and science subjects. Schools from across Lancashire were invited to take part in an afternoon of higher maths taster activities and a talk from Simon Singh, a renowned writer and film-maker, who makes maths and science accessible to the wider public.

Mrs Ackroyd and Mr Harrison were very proud of the group – they tackled advanced maths problems with tenacity and enthusiasm and really listened to the advice they were given about the advantages of maths in their future careers. Well done Year 10!





## DISNEY LAND PARIS TRIP

Earlier this month 48 students and 8 members of staff embarked on a magical weekend in Paris. After a busy day of travelling the group got an “early” night ready for a busy day exploring the two theme parks.

Our morning was spent in Walt Disney Studios, with some of our students overcoming their fear of heights on the Tower of Terror, riding the super-fast thrill-ride Avengers and spotting some of their superheroes walking around the park.



We then made our way across to Disneyland Park, getting our first glimpse of the famous castle. The group were able to take in the magic of Disney at Christmas, walking along the well decorated street, with shops and restaurants full of festive delights. Our afternoon was spent exploring the rides and attractions in this park, with some highlights being the rollercoasters of Pirates of the Caribbean and Thunder Mountain, the laser quest themed Buzz Lightyear ride and the 3D Ratatouille experience. Fortunately, our staff and students even had chance to do some valuable Christmas shopping, collecting some memorabilia from their unbelievable experience.





As night descended, the group gathered back together to get a perfect view for the Christmas parade, witnessing some of the famous characters, including the main man Santa Claus. The parade finished with a short firework display, preparing us for the main event after our dinner. A quick pit stop for some food, but just as important was to warm us all up, and then we were back out ready to watch the firework display, surrounding the castle.



Our very busy day came to an end, but our students came away with magical moments that will remain in their memories for a long time.



Our second day saw us head out on a tour of Paris, with our coach driver managing to stop off for a perfect group picture in front of the Eiffel Tower. We then headed to Montparnasse Tower for a climb to see the stunning views overlooking the capital city, and grab some photos. Our afternoon was spent on a boat trip along the River Seine, taking in views of Notre Dame, Parliament buildings, and the Eiffel Tower for more photos. Once back on the coach, we further explored the city centre before heading back to the Eiffel Tower for a view and some pictures whilst it was all lit up. We were also very lucky to be there on the hour, as the lights flicker and dance for 5 minutes, completing our magical trip.



Our students were a credit to our community, and it certainly was an unforgettable trip. We hope to run this trip again next year, so please keep your eyes peeled.

# LANCASHIRE SEXUAL HEALTH SERVICE VISIT

On Monday 11th December Rachel Emmot from the Lancashire Sexual Health Service visited Shuttleworth. She delivered assemblies to years 9, 10 and 11 to explain what the Lancashire Sexual Health Service can offer to students in our area.

Her assemblies were very engaging and informative; students conducted themselves impeccably!

This input supports what students study in PSHE around consent, contraception and being informed and responsible citizens. We try to work with outside agencies where possible to further enhance our curriculum offer.



**Lancashire  
Sexual Health  
Service**

**NHS**  
**Blackpool Teaching  
Hospitals**  
NHS Foundation Trust

***What is Sexual Health?***

***Who is responsible  
for your Sexual Health?***





## BREAST CANCER NOW CHARITY EVENT - CO-ORDINATED BY EBONY WILKINSON

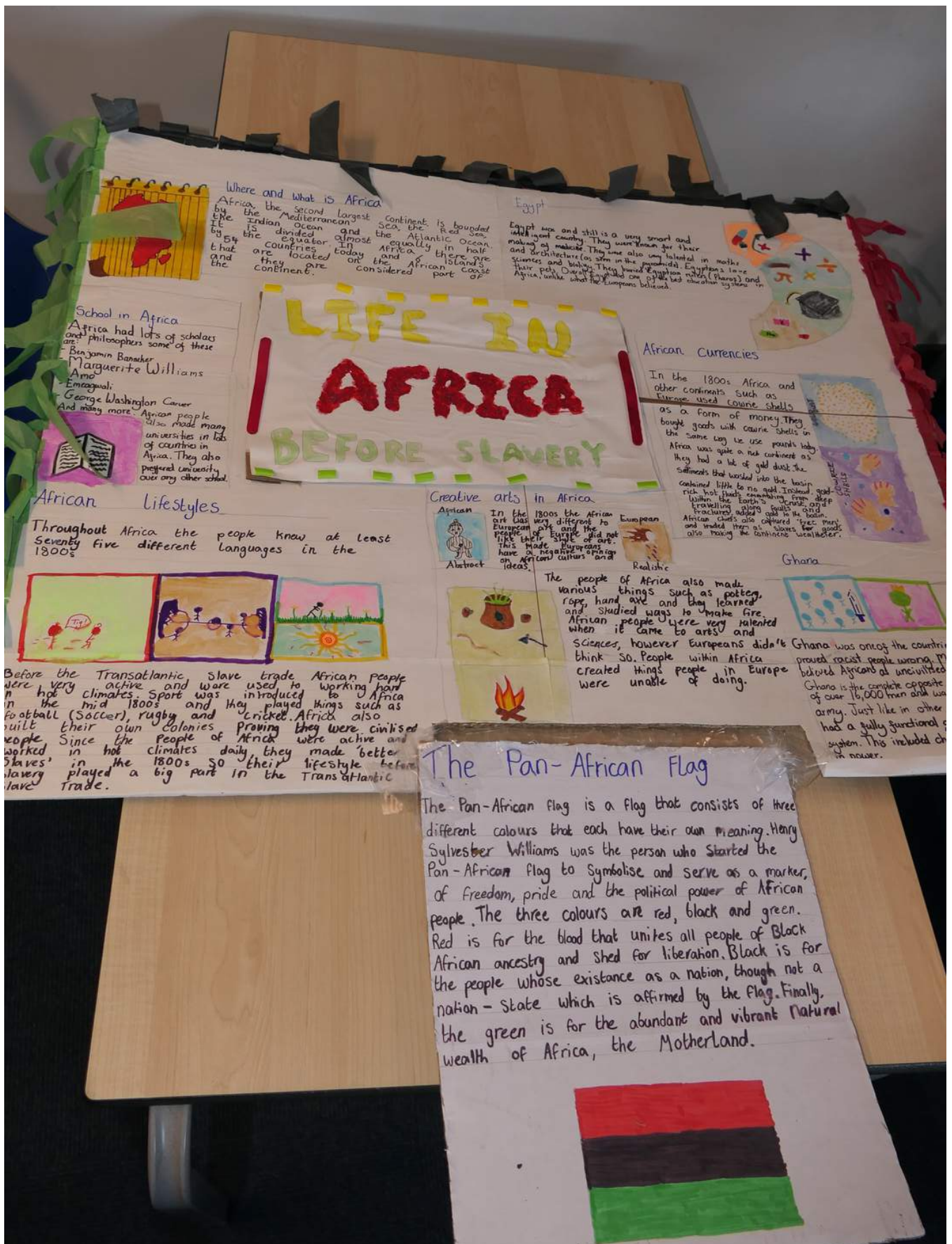
Ebony Wilkinson, Year 9, is planning and co-ordinating a charity event to raise money for Breast Cancer Now. She approached Mrs England with her plan and has been incredibly organised and proactive! The event is for staff and students to wear pink accessories to raise awareness about breast cancer and will take place on Thursday 21st December. Ebony is asking for donations of £1 and is also making pink ribbons which will be on sale for 50p to staff and students in the run up to the event.

Ebony created posters to display around school and a PowerPoint which she shared with all staff in a briefing and with all year groups in assemblies. This charity is close to Ebony's heart as her auntie was diagnosed with breast cancer. Well done Ebony - a great cause and a great example of student leadership!



# CREATIVE KEY STAGE 3 STUDENTS

A huge thank you to our Key Stage 3 students who have produced some superb pieces of homework this term.



We have had some brilliant presentations and detailed newspaper reports that have covered the history topics the students have been learning about this year.



The images show how creative our students have been in making models of medieval castles and the trench systems from the First World War.



The quality of work has been staggering!



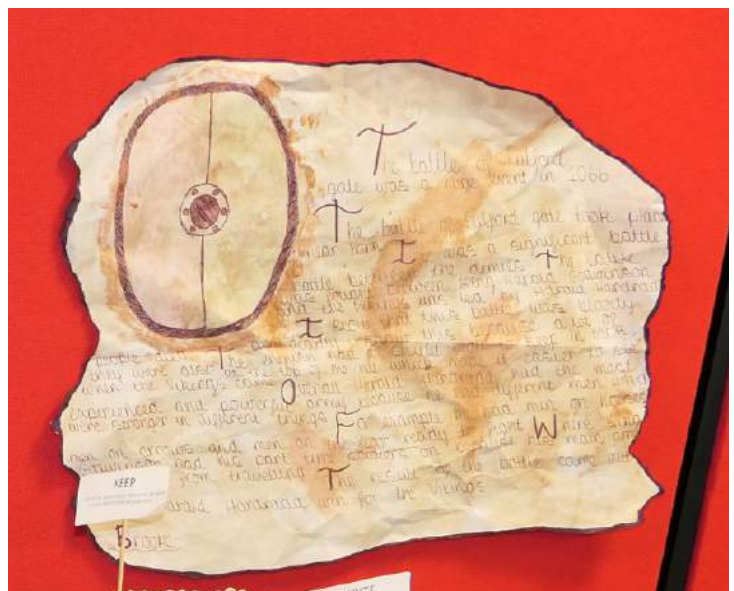






The projects will continue next term, alongside more IT based activities to broaden our horizons further.

Merry Christmas and a Happy New Year to you all.









## PRESENT PICKING WITH BURNLEY TOGETHER

Our incredible prefects and ambassadors came together for a heart-warming Christmas charity visit to Burnley Together. We spent the day picking and packing Christmas presents, spreading smiles and warmth to those in need. We're grateful to be a part of making this Christmas a little brighter for our community.

Merry Christmas and a Happy New Year to you all.









## REWARDS - OUR LESSON LEGENDS!

This week, we had an assembly to acknowledge and celebrate the accomplishments of our students. We recognised and applauded the outstanding efforts of our students who were nominated by faculties for demonstrating our school values consistently in lessons.



The highlight was unveiling the "Legends of the Term" awards, recognising outstanding individuals. Standout winners drawn at random received vouchers as a special treat for their remarkable achievements. The atmosphere was buzzing with excitement and pride as we collectively honoured the dedication and hard work that make our school community truly exceptional.





Year 10



Year 9







Year 8



Year 7



## SHUTTLEWORTH SHIELD

This half term has seen the return of the Shuttleworth Shield. Students in Y7/8/9 are invited to take part in enrichment activities to try and complete the shield. There are three disciplines: physical, skill and volunteering. Once a student has 10 staff signatures for one of the disciplines they get a bronze badge and prize, a second discipline means a silver badge and completing all three means gold! There will be some extra special rewards for students who complete a full Shuttleworth Shield.



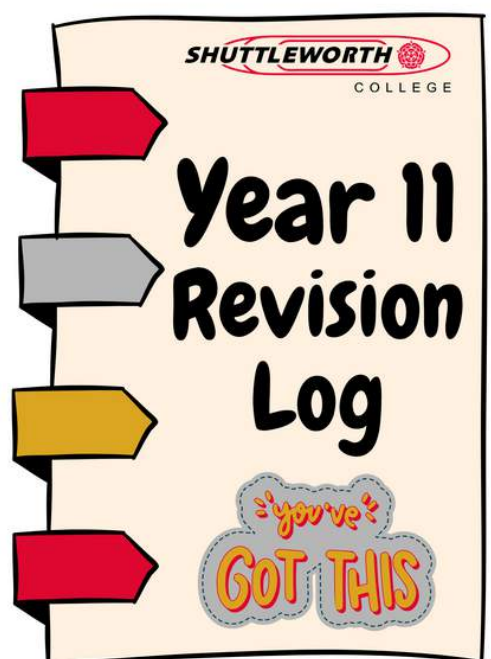
## DUKE OF EDINBURGH BRONZE AWARD



This will be launched with Y9 in January, and there will be details for older students who are keen to continue their work on this.

## YEAR 11 REVISION REWARDS

Year 11 have been given cards to collect staff signatures when they stay after school to revise. 15 signatures can then be swapped for either a high street voucher or money off the prom! Remember to get them signed, Y11!





## SHUTTLEWORTH WINTER SHOWCASE

On Tuesday 19th December we held our Winter Showcase. The evening was a celebration of the arts and comprised musical performances, a drama piece and poetry readings. Students from Y7 to 11 took part as we moved from the choir opening the show with a rendition of the traditional carol Silent Night, through to a Y10 GCSE drama group performance of A Christmas Carol and lots of music performances, both ensembles and solos.

The finale, Don't Stop Believing, was performed by Y11 GCSE music students and saw the audience clapping along. The evening was interspersed with lovely poetry readings and we showed off a range of students' art work too which was provided by the creative technologies faculty.

Families and members of the community left saying the show was absolutely brilliant and all performers are to be commended. The evening's comperes were our head boy and girl; Jubril Lawal and Emily-Jae Smith, and their presentation was seamless!









**WELCOME TO OUR**

**SHUTTLEWORTH COLLEGE**

**WINTER SHOWCASE**

ALL PROCEEDS TO  
**BREAST CANCER NOW**

**19TH DEC 2023 6:30PM**

AN EVENING OF THE ARTS - MUSIC, DRAMA AND POETRY  
BURNLEY ROAD PADIHAM BB12 8ST  
[www.shuttleworthcollege.org](http://www.shuttleworthcollege.org)

**WELCOME MESSAGE**

**JINGLE BELL ROCK**  
**SILENT NIGHT - CHOIR**

**NOBILITY - JUBRIL LAWAL**

**DIANE - KATIE SMILLIE**

**BERTIE'S BLUES - MR THOMPSON AND FILIP DZIADOSZ**

**HOPE IS THE THING WITH FEATHERS - AUTUMN GRIFFITHS**

**ONCE UPON A DECEMBER - LILLIANA TURZYNY**

**ART PRESENTATION - CREATIVE TECHNOLOGIES**

**THE QUALITY OF MERCY - EMILY-JAE SMITH**

**THE RIFF MONSTER - JUBRIL LAWAL, DYLAN SCOTT AND DOMINIC HARPER**

**A CHRISTMAS CAROL (KIND OF) - YEAR 10 DRAMA**

**ONE CALL AWAY - CHARLOTTE THOMPSON**

**GLWYSEN - ISAAC LEWIS**

**LAST CHRISTMAS - DARCEY MORTON**

**IF I WERE KING - OLLIE HOLLAND**

**SNOWMAN - JOLIE FORREST**

**DON'T STOP BELIEVING - JOLIE FORREST, FILIP DZIADOSZ AND ALFIE LINGARD**

**THANK YOU TO ALL STAFF AND STUDENTS FOR THEIR HARD WORK AND TIME TO PREPARE FOR THE WINTER SHOWCASE!**

**ALL PROCEEDS FROM TICKETS WILL GO TO BREAST CANCER NOW.**

**BREAST CANCER NOW** The research & care charity

Thanks must also go to the staff who worked incredibly hard preparing the evening: Mr Olyott, Mr Thompson, Miss St Jean, Miss Finnigan and Miss Wheal. They were invited on stage at the end of the show to receive cards and gifts from the students.

The evening ran all the more smoothly thanks to the help of our newly appointed ambassadors in Y7-10 who welcomed students on the door, handed out programmes and guided families to their seats. They were all a credit to our school community!

Entry was £2 per person with proceeds going to Breast Cancer Now, the charity championed by Ebony Wilkinson, Y9. We raised over £300 as a school community!



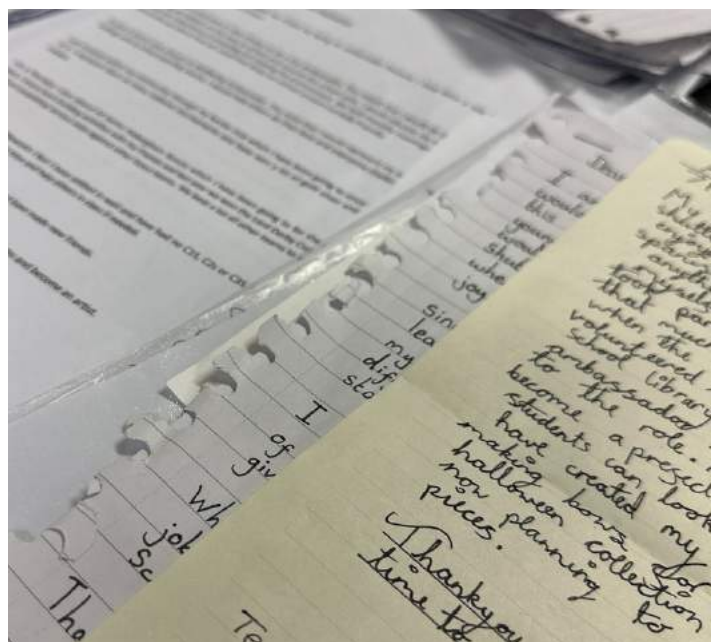
# STUDENT LEADERSHIP

## MEET OUR STUDENT AMBASSADORS

This week in our assembly, we happily announced the new group of Student Ambassadors. These students really represent our school values well, showing great leadership, a strong dedication to community service, and a commitment to making our school a positive place.



To become a Student Ambassador, each student went through a selection process. They shared their involvement in extracurricular activities and demonstrated how they live out our school values. These Ambassadors truly embody the principles that make our school special, from pride and resilience to community spirit.



You'll easily recognise our Student Ambassadors by a specially designed tie which they will choose. This unique tie symbolises their dedication to leadership, community, and school pride.



These ambassadors play an active role in improving our school experience. Throughout the year, they'll be involved in various activities, such as organising community service projects, representing students in school events, and participating in decision-making processes. Their influence goes beyond the classroom as they work to create a positive and inclusive atmosphere that encourages growth and friendship.







Congratulations to all the students who earned Ambassador status this year!

## PREFECT REWARD LUNCH

Our year 11 prefects were treated to an award lunch as a thank you for presenting in assembly.

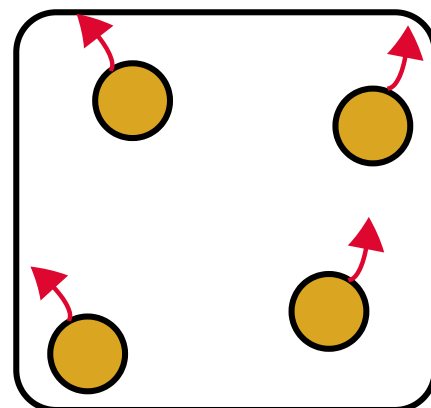
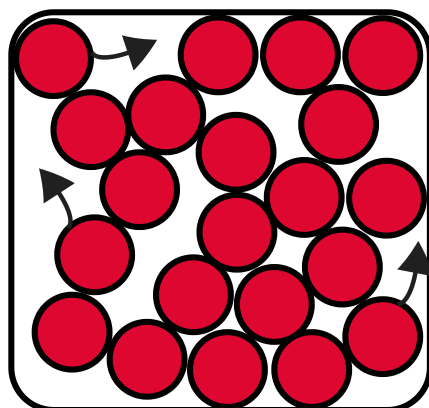
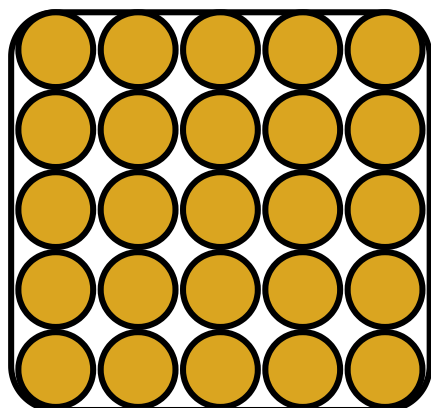


# FACULTY FOCUS

# S C I E N C E



Year 7 have been learning about a variety of topics across biology, chemistry and physics, building on the fundamental knowledge they had learned in the first half term. Students have covered (or are in the process of covering) forces and how they can cause motion in objects; movement, including learning all about the skeletal system and its functions; and the particle model – solids, liquids, gases and the changes of state. They have also been showing us how they are developing their practical skills. Many have also been attending the debate club which is run each week by Miss Hawkins and Miss McDonald from the science department. More information on that coming up!

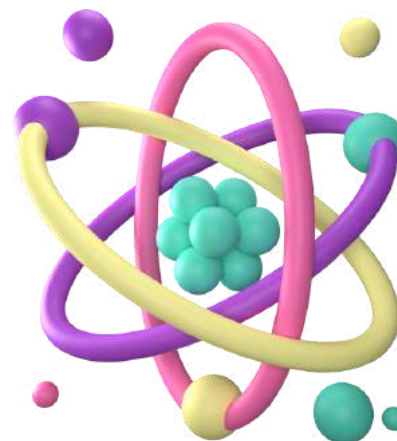
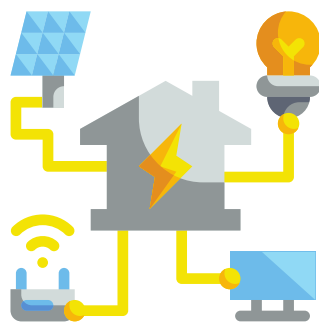
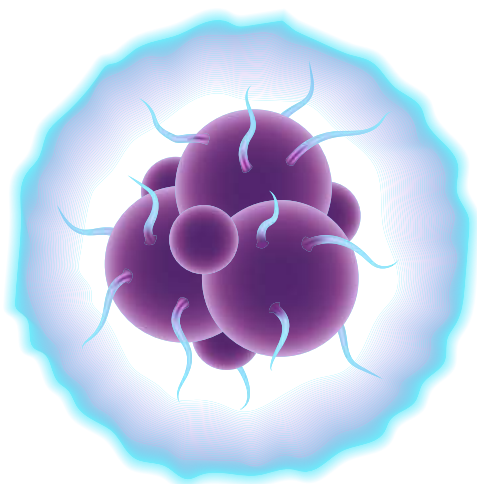
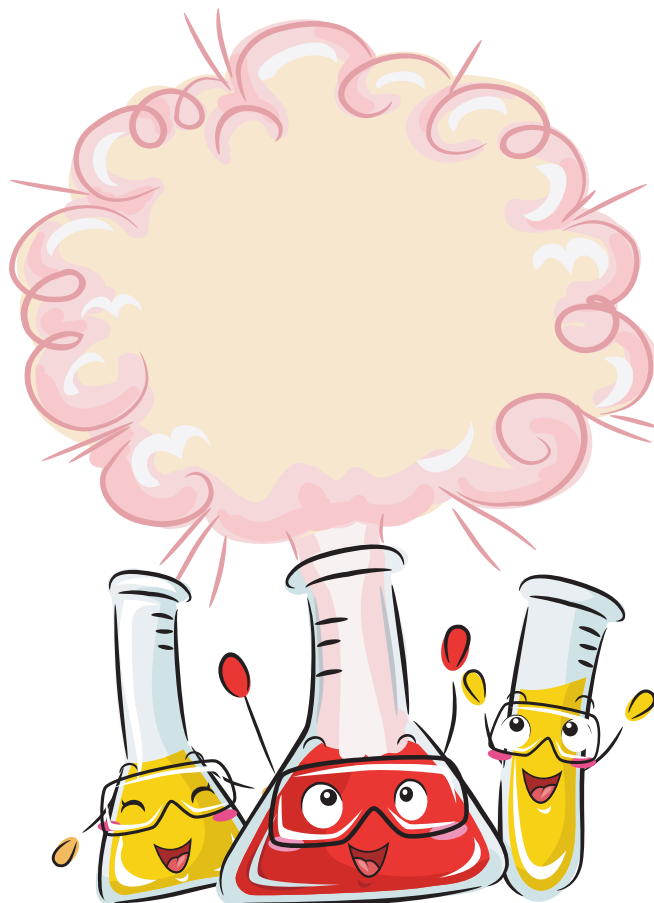




Year 8 have been learning about metals and non-metals, their properties and their chemical reactions with substances such as acids; breathing and the respiratory system; and all about the motion of objects, including moments, pressure and how speed is affected by various factors.

Year 9 have been learning about different types of reactions including combustion, endothermic and exothermic reactions; inheritance and variation, looking at how we are all different and why; and the motion of objects and how we can represent it graphically.

Year 10 have now been studying their GCSE science courses for over 3 months, and have been making strides in both content and development of practical skills. In biology, students have been covering cells, infection and the body's response; in chemistry they have been learning about the structure of the atom and the structure and properties of different elements in the periodic table; and in physics students have been learning about energy and electricity. We have also been focusing on metacognition strategies and techniques, especially when giving feedback on end of unit assessments and students are getting more used to these being used in class.



Year 11 have just completed their first set of mock exams and many achieved some fantastic results. In class, students will be focusing on completing the course over the next few months and preparing for their second set of mocks at the end of February, assessing units not covered in the November mocks.

## BUSINESS AND MARKETING

Year 10 have begun their new business course with gusto, as they spent the first term studying fundamentals of business, including spotting an opportunity, characteristics of entrepreneurs and risk and reward. They've all come up with plenty of suggestions for future businesses and evaluated them as a class. Next term they're learning about marketing, and will look at market research. Look out for their questionnaires, coming soon!



Year 11 have worked incredibly hard preparing for their mocks and have spent the last month working on improving their application to various business contexts, from second hand furniture, personalised hoodies, wedding photography and mobile phone cases.

## HEALTH & SOCIAL CARE

In health and social care, Year 10 have been learning about growth and development across all of the life stages. They have then built on this to learn how various factors affect our development as we age using multiple case studies including Tyson Fury and Britney Spears.



**Britney Spears** — 23/11/23

**Physical:** Physical peak. Physical capabilities and fertility may decrease towards the end of this stage. Early menopause it might be different because she isn't really and fit because of her drinking and drug problems.

**Intellectual:** May be different. May continue with education especially if they dropped out. Can develop new skills and better qualifications. This could be different because if she is feeling anxious she won't have the capacity to learn.

**Emotional:** Close and intimate relationships marry/commit. Start family and parental responsibility. This could be different because she will feel like she can't trust anybody and her self-image wouldn't be good.

**Social:** Active social life. Make new friends. Balanced work life, family life and social life. This will be different because of anxiety and health problems. Social would make her feel isolated.

We've had some very interesting conversations about gender expectations throughout different life stages and how this influences us!

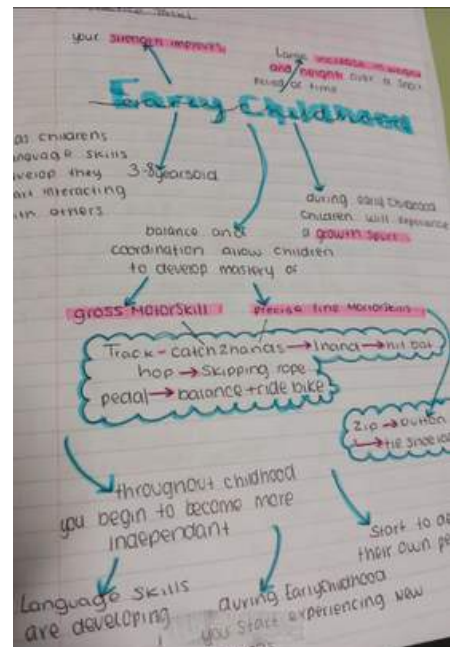


Living in the city vs Living in rural areas

<ul style="list-style-type: none"> <li>access to help and local to shop</li> <li>a variety of job opportunities</li> <li>close healthcare and education</li> <li>more people to communicate with to develop motor skills</li> </ul>	<ul style="list-style-type: none"> <li>stay away from bad temptations</li> <li>no access to help if needed</li> <li>no role models so develop or to lose up to not very confident</li> </ul>
-------------------------------------------------------------------------------------------------------------------------------------------------------------------------------------------------------------------------------------	----------------------------------------------------------------------------------------------------------------------------------------------------------------------------------------------

Emotions - very low self-esteem as you can't have stuff others have and don't feel safe as if living on streets etc.

Social - you may trouble in finding friends and not have the motivation to go out, struggle socialising.



Year 11 have been learning about barriers to accessing care, and how skills, values and attributes can help to overcome these. We have looked at various scenarios and examined the steps that we would take to support service users in providing a high standard of care. They have completed their second piece of coursework under exam conditions and have worked incredibly hard towards this. We are immeasurably proud of them- well done Year 11!

## DEBATE CLUB



Shuttleworth College Debate club is open to year 7-10s who would like to explore the skill of debating. The aim of the club is to practise persuasion, oracy skills, critical thinking and respect. By selecting a wide range of topics for debate we aim to broaden the world view of students and expose them to subjects new to them. The students have been using different research sources such as videos, articles and opinion pieces to find evidence to back up their arguments.



Another objective is to encourage students to view the world around them through a critical lens and practise seeing the viewpoint of other. This is essential as students are assigned to the proposition or the opposition at random and may find themselves arguing contrary to their personal beliefs.

Sessions this year have included:

- Should zoos be banned?
- Should the UK bring back the death penalty?
- Should school uniform/homework be banned?
- Should school holidays be longer?



# SAFEGUARDING

CHILDREN AND FAMILY WELLBEING SERVICE  
BURNLEY  
PRESENTS

Everyone  
welcome

Little Party  
People  
children's  
Entertainer

Family  
Disco

Art &  
Craft

# WINTER FAMILY FUN

FUN FOR THE WHOLE FAMILY

**FRI 5 JAN**  
**10am-2pm**

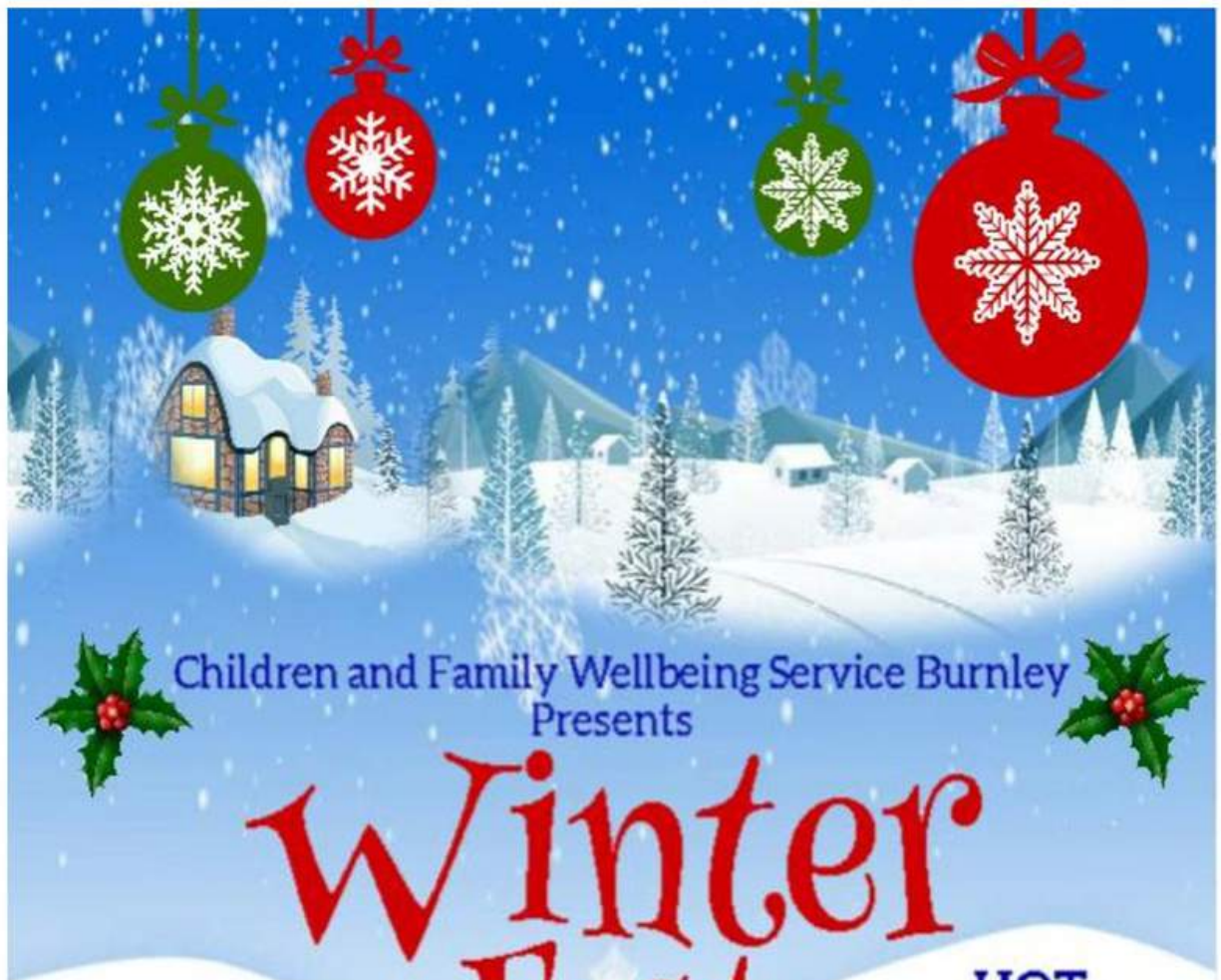
**HOT FOOD**

**Burnley Zone, Whittam Street,  
Burnley**

To book your family place, call 01282 470707







Children and Family Wellbeing Service Burnley  
Presents

# Winter Fest

Everyone  
welcome

HOT  
FOOD

Art & craft  
Thur 4 Jan 10am-2pm  
TAZ Children's  
entertainer  
Family  
disco

Burnley Zone, Whittam Street, Burnley

To book your family place call  
call 01282 470707



Children and Family Wellbeing  
Service presents

# Winter Wonderland

Thur 28  
Dec  
10am-2pm

*Family session*

Children's Entertainer with Magic and Mayhem,  
Disco, Craft & Hot Food for children and parents  
*Everyone welcome*



To book call 01282 470707

**Burnley Zone**

Whittam Street, Burnley



CHILDREN AND FAMILY WELLBEING  
SERVICE PRESENTS

# Winter EXTRAVAGANZA

FRIDAY  
**29**  
DECEMBER

FAMILY  
EVENT

10am  
to  
2pm

Little Party People Children's  
Entertainer / Disco / Craft /  
Hot food for everyone

**Everyone welcome**



TO BOOK YOUR PLACE CALL  
01282 470707

**BURNLEY ZONE, WHITTAM STREET, BURNLEY**





Mental Health Support Team  
ECAS | East Lancashire Child and Adolescent Services

# Introduction to the Mental Health Support Team (MHST)

**NHS**  
East Lancashire Hospitals  
NHS Trust  
A University Teaching Trust

**Join us to find out what work the East Lancashire MHST are doing in Burnley, Rossendale, Hyndburn and Ribble Valley secondary schools & colleges. How we support young people, the school and families.**



Thu. 14/12 5-5:30 Meeting ID: 391 823 806 263 Passcode: tStJVz	Fri. 15/12 12:30-1 Meeting ID: 383 173 167 008 Passcode: yMFaox	Mon 18/12 12-12:30 Meeting ID: 336 707 353 656 Passcode: RUV3tP
----------------------------------------------------------------------	-----------------------------------------------------------------------	-----------------------------------------------------------------------

Fri 5/01/24 12:30-1 Meeting ID: 366 549 971 996 Passcode: NEuG9k	Tue 9/01/24 5:30-6 Meeting ID: 399 104 141 826 Passcode: oFGySd	Fri 12/01/24 12-12:30 Meeting ID: 378 932 882 609 Passcode: 6ptUap
------------------------------------------------------------------------	-----------------------------------------------------------------------	--------------------------------------------------------------------------

Wed 17/01/24 12- 12:30 Meeting ID: 398 115 339 676 Passcode: BUXMjk
---------------------------------------------------------------------------

**Join us on Microsoft Teams by adding the ID and passcode of your chosen date.**

To access by scanning the barcode or going to <https://www.microsoft.com/en-gb/microsoft-teams/join-a-meeting>



# Family Matters



**Handling Anger  
in the Family**



**ADHD**



**Autism**



**The Teenage  
Years**

## Family Courses 4 Sessions - Available to all Running in Burnley

For anyone parenting children aged 5 - 16

<b>September</b>	<b>October</b>	<b>November</b>	<b>January</b>	<b>February</b>
<b>Monday</b>	<b>Tuesday</b>	<b>Wednesday</b>	<b>Thursday</b>	<b>Tuesday</b>
4, 11, 18, 25th	3, 10, 17, 31st	8, 15, 22, 29th	11, 18, 25, 1st	6, 13, 20, 27th
Handling Anger in the Family - am Autism - pm ADHD - eve	ADHD - am Handling Anger in the Family - pm Autism - eve	Autism - am ADHD / Handling Anger in the Family - pm The Teenage Years - eve	Handling Anger in the Family - am Autism - pm ADHD / The Teenage Years - eve	ADHD - am Handling Anger in the Family - pm Autism - eve

AM course 9:30 - 11:30am  
PM course 12:45 - 2:45pm  
EVE course 6:30 - 8:30pm

**Family Clinic - Appointments available Friday -  
Info, advice or just a friendly listening ear for families in need of support.  
Contact us to book a face to face or a telephone appointment.**



# OPERATION ENCOMPASS

OPERATION  
ENCOMPASS

## Operation Encompass is a national scheme that operates jointly between schools and all police forces.

“ Children who live in homes where there is domestic abuse, or who experience domestic abuse in their own teenage relationships, can be negatively impacted by this experience. ”

“ Children who experience domestic abuse are recognised as victims of domestic abuse in their own right! ”

“ We have ensured that a member of our staff, (Designated Safeguarding Lead) known as a Key Adult, has been trained about Operation Encompass procedures. This allows us to use the information that has been confidentially shared with us by the police, to understand how a child may be impacted by domestic abuse and to then offer support to the child/ren in our care. ”

“ Operation Encompass means that our school will be told, prior to the start of the next school day, when police have attended an incident of domestic abuse where there is a child or young person who attends our school who is related to any of those involved in the incident. ”

“ This information means that we can understand a child's behaviour and support that child in whatever way they may need or want. ”

“ We are keen to offer the very best support possible to all our pupils and we believe that being part of Operation Encompass helps us to do this. ”

Domestic Abuse Act 2021

[www.operationencompass.org](http://www.operationencompass.org)

OPERATION  
ENCOMPASS

## We are an Operation Encompass School

For further information, please come and see us.

 **OPERATION  
ENCOMPASS**  
In every force. In every school. For every child.

**SHUTTLEWORTH**   
COLLEGE

 Lancashire  
Constabulary

# MEET OUR SAFEGUARDING TEAM



Ext. 11173

**Rebecca Bonny**

**DESIGNATED SAFEGUARDING LEAD**



Ext. 11059

**Tom Baiamonte**

Head of Year

**DEPUTY DSL**



Ext. 12223

**Tracy Selves**

**DEPUTY DSL**



**Jo  
Grice**

Ext. 11084  
Head of Year



**Melissa  
Southern**

Ext. 11062  
Head of Year



**Mel  
Thomas**

Ext. 11014  
Medical



**Melissa  
Burns**

Ext. 11113  
Inclusion

## DESIGNATED SAFEGUARDING OFFICERS

**Marie Shaw**

**SAFEGUARDING GOVERNOR**

We recognise our moral and statutory responsibility to safeguard and promote the welfare of students. We endeavour to provide a safe and welcoming environment where children are respected and valued. We are alert to the signs of abuse and neglect and follow our procedures to ensure that children receive effective support, protection and justice. Our aim is to provide a safe and secure environment for students, staff and visitors. If you have any concerns about the safety of a child please ensure you report it to a member of the safeguarding team:-

[safeguarding@shuttleworth.lancs.sch.uk](mailto:safeguarding@shuttleworth.lancs.sch.uk)

If your concern is of immediate harm or outside of school hours, please report to the Police or Children Social Care 0300 123 6720  
0300 123 6722 (evenings/weekends)

**Safeguarding is our top priority. Please help us in ensuring our school is a safe place!**



# STAFF NEWS

WELCOME to  COLLEGE

## ANDRIA TOMLINSON

Andria has joined us as an Assistant Medical Officer. Welcome Andria.



## AMY GOLDSACK

Amy has joined us as a Finance Officer. Welcome Amy.

## KATIE TIPLING

Katie has joined us as a HR Recruitment & Premises Officer.

