

Think  BIG



  
SUCCEED  
TOGETHER

Bespoke

Pathways

Options  
2026



- 4** Introduction & Key Subjects
- 6** Entry Level Qualifications
- 7** Careers Education, Information, Advice & Guidance
- 8** GCSE Art & Design
- 9** Cambridge Nationals Creative iMedia
- 10** GCSE Drama
- 11** GCSE English Language
- 12** GCSE English Literature
- 13** GCSE Geography
- 14** GCSE History
- 15** WJEC Vocational Award in Hospitality & Catering (Technical Award)
- 16** GCSE Mathematics
- 17** GCSE Combined Science Trilogy
- 18** Notes
- 19** Notes

# TABLE OF CONTENTS



# Introduction

This booklet is designed to help you decide what subjects you would like to choose to study in Years 10 & 11. It will give you details of all the pathways you can choose and some key information about each subject. It is very important that you read all of the information carefully before you make your decision. After half term, all students and their families will be invited in to have a one-to-one meeting with a member of the Senior Leadership Team, and we ask you to look through this booklet over half term in preparation for these meetings.

## Bespoke Pathway

Our bespoke pathway is aimed to support those students who may struggle to access and succeed with the full options offer for Years 10 and 11.

Students following the bespoke pathway will still follow the core offer, but spend slightly more time on these subjects to help them master the skills needed to succeed:

- English (GCSE and Entry Level)
- Maths (GCSE and Entry Level)
- Science (GCSE and Entry Level)
- Core PE

Students will work on Entry Level qualifications in English, Maths and Science to support them in accessing the GCSE in these subjects. They will also have more time allocated to these subjects.

In addition, they will study the following as part of other subjects or during form time activities.

Careers

Citizenship

Physical, Social & Health Education (PSHE)

Religious Studies



Below is a table of information to guide you on the weightings of examination and portfolio for each subject which can be used to inform your decisions.

Subject	Exam	Portfolio
Art/3D Design	40%	60%
Drama	40%	60%
English	100%	0%
Geography	100%	0%
Hospitality & Catering	40%	60%
History	100%	0%
Creative iMedia	40%	60%
Maths	100%	0%
Science Combined	100%	0%

***To enhance the core curriculum on offer to students, a range of high quality extra-curricular sessions will be offered after school – a list outlining these subjects is available on our website.***

# Entry Level Qualifications

To support students on the bespoke pathway in their transition from KS3 to GCSE qualifications, students will complete entry level qualifications in English, maths and science alongside studying for the GCSE.

Entry Level Certificates (ELCs) are nationally recognised qualifications which give students the opportunity to achieve a certificated award. In each subject, the specifications are designed to allow students to be taught alongside the GCSE.

As part of their options there may be other academic subjects they choose to study which will also offer Entry level along side the GCSE qualification.

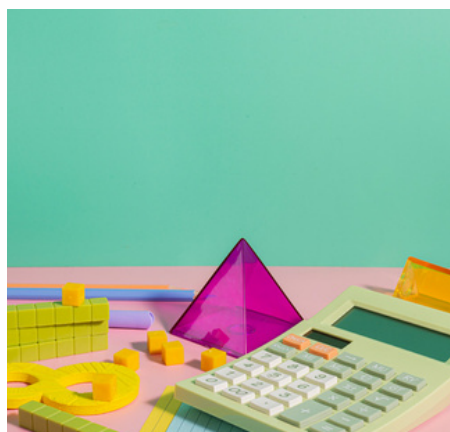


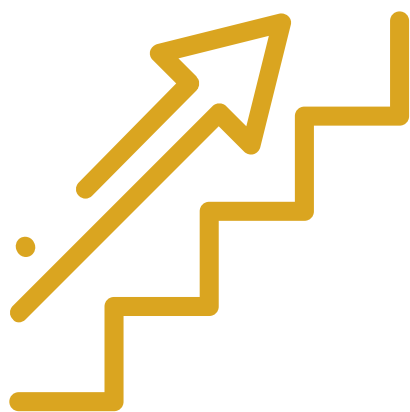
## What is the difference?

Entry level qualifications have a clear focus on fundamental literacy and numeracy, as well as developing essential skills, through step-by-step progression. The courses are designed to work towards achievable goals, enabling students to succeed, serving as a strong foundation which offers a stepping stone for further learning.

## How are they assessed?

Entry level qualifications are made up of a series of separately assessed units, which means that students' achievement is regularly recognised and they will build up the qualification as they progress through key stage 4. In addition, students' work and assessments will form a portfolio which demonstrates their achievement.





# Careers Education, Information, Advice & Guidance (CEIAG)

Over the last few years, the education and training options for young people after Year 11 have changed.

These options all have different methods of study and assessment, so students can choose the option that suits them the best. The entry requirements vary but, for all subjects at all levels, providers like to see a breadth of subjects at GCSE level. A basic summary is available below:

GCSEs which lead to one of:				
Type	A LEVELS	T LEVEL	VOCATIONAL	APPRENTICESHIP
Summary	3-4 subjects Theory-based Mostly exams	1 subject Mix of exam, coursework & work placement 20% work based	1 subject More practical work Mostly coursework	1 subject/job role Paid work 80% work, 20% training
Entry Requirements	Min. 5 x GCSEs at grade 5+ Plus additional subject requirements	Min. 5 x GCSEs at grade 4-5+	Varied requirements eg.: Level 3 - 5 x GCSEs at grade 4- 5+ Level 2 5 x GCSEs at grade 4+ Level 1 - 3 x GCSEs at grade 3+	Varied requirements
Time	2 years	2 years	1-5 years	Varied duration, 1 year +
Provider	Sixth Form or College	College	College	Employer with College or Training Provider

Alternative options are available at entry level, if students achieve grade 2 or below in their GCSE subjects. These vary from supported internships, foundation pathways, life skills and entry level vocational courses.

All of these post-16 options can lead to a university degree, higher/degree apprenticeship or employment, although some routes have more specific entry requirements than others. During the next two years at Shuttleworth College, your child will continue to receive different aspects of careers education, culminating in at least one Information, Advice & Guidance (IAG) appointment in Year 11 to plan out their individual choices in detail.

More CEIAG information can be found on the careers page of the school website:  
[www.shuttleworthcollege.org/curriculum/careers](http://www.shuttleworthcollege.org/curriculum/careers)



# GCSE Art & Design

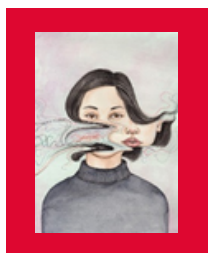
## AQA GCSE Art & Design Courses

Please note that you can only select one of Art or 3D Design.

### Whichever art course you prefer, there are key aspects that run through both:

- drawing and written annotation is a key element of all art and design courses and this must be mastered by students in order to secure the high-grade bands
- all students are required to create presentation sheets that document their journey through their GCSE projects
- students are required to demonstrate enthusiasm and dedication as they are expected to commit significant time out of school hours (home learning and studio time after school) to finish tasks.

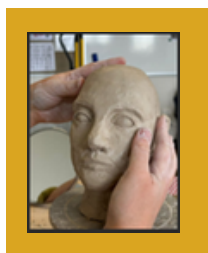
### What can I study?



#### OPTION 1: GCSE Art, Craft & Design

This will suit you if:

- *you primarily enjoy drawing and painting*
- *you would like to work in a wide range of artistic disciplines including paint, printing, mixed media, ceramics, sculpture and textiles.*



#### OPTION 2: GCSE Three Dimensional Design

This will suit you if:

- *you prefer sculpting and building outcomes using a range of materials*
- *you would like to focus on the use of materials such as ceramics, wood, plaster, found objects and the use of CAD/CAM- using software such as Serif Draw, 2D Design and the laser cutter.*
- *you would like to develop and create designs for sculpture, architecture, jewellery, interiors and everyday objects.*

**How will I be assessed?** All GCSE Art courses are assessed as follows:

- **Unit 1 – NEA - Portfolio of work - 60% of the final GCSE grade.**

This consists of all the work completed in Year 10 and in the autumn term of Year 11.

- **Unit 2 – NEA - Externally set assignment - 40% of the final GCSE grade.**

A final exam project which begins in January of Year 11. An 11 week preparatory period concludes in a 10 hour exam in which pupils must produce a previously researched and planned final artwork without assistance.

### How will this subject help me progress to college & university?

### What kind of careers could I follow with this subject?

All GCSE Art & Design courses will give you the opportunity to pursue college diplomas or A Levels in a range of Art and Design based subjects. This will then lead to an Art Foundation course (Pre Bachelor of Arts) and then a degree course at University which will take 3 to 4 years to complete. All the courses above offer you opportunities to interpret ideas visually whilst educating you about the role of Art and Design in society. They cover some aspects of skills used in the fine art, textile, fashion, three-dimensional design and graphics industries. Art GCSEs are particularly important if you are interested in careers such as fashion/textiles, photography, television and film, advertising, theatre, illustration, interior/commercial design and architecture as well as careers where imagination and presentation skills are required.





# Cambridge Nationals Creative iMedia

## How will I be assessed?

The course is assessed at the end of the qualification and is equivalent to GCSE grading.

All colleges accept this qualification and grading.

Grades are based on assessment across all three units.

- R093 – worth 40%
- R094 – worth 25%
- R095 – worth 35%

Students will be awarded a grade from Pass at Level 1 through to Distinction\* at Level 2.



## What kind of careers could I follow with this subject?

This qualification allows you to access a wide variety of careers in the media sector due to the use of specialist equipment and software.

Examples include:

- Graphic designer
- Web designer
- TV production
- Photography
- Game design
- Animation

## What will I study?

Digital Media is a key part of many areas of our everyday lives and vital to the UK economy. Production of digital media products is a requirement of almost every business so there is huge demand for a skilled and digitally literate workforce. This course will help you to develop independence and confidence in using skills that would be relevant to the media industry. You will study the following THREE units:

### Unit R093 (external exam): Creative iMedia in the media industry. This is assessed via an exam – 1 hour 30 mins [40%]

In this unit you will learn about the media industry, digital media products, how they are planned, and the media codes which are used to convey meaning, create impact and engage audiences. Topics include:

- The media industry
- Factors influencing product design
- Pre-production planning
- Distribution considerations

### Unit R094 (internal controlled assessment): Visual identity and digital graphics. This is assessed via by completing a set assignment [25%]

In this unit you will learn to how to develop visual identities for clients and use the concepts of graphic design to create original digital graphics to engage target audiences. Topics include:

- Develop visual identity
- Plan digital graphics for products
- Create visual identity and digital graphics
- You will also learn a range of design skills using the Adobe Creative Suite including Photoshop and Illustrator.

### Unit R095 (internal controlled assessment): Characters & Comics. This is assessed via by completing a set assignment [35%]

In this unit you will learn how to plan, create and review comics which contain original characters. Topics include:

- Plan characters and comics
- Create characters and comics
- Review characters and comics

## How will this subject help me progress to college/sixth form & university?

This course gives you a wide range of skills that can be used to access A Level, technical or vocational courses in Media or Computing such as Games Design, Creative Media Production and Computing which will then help progression to degree level Computing, Media Studies, Digital Media and Digital Marketing. To be able to study these courses in college you need to aim for at least a Merit grade in your Cambridge Nationals Creative iMedia course.



# GCSE Drama

## What will I study?

GCSE Drama is a highly appealing course due to the diverse range of activities, combining both practical and theoretical approaches to learning. This combination of academic and creative challenge with a practical focus makes for a dynamic and engaging course. GCSE Drama enables students to learn to explore real life in a safe environment and prepares them for the wider world. This course is suitable for students who want a firm foundation in drama, learning to analyse script, devise, develop, interpret and communicate practical outcomes. By understanding the process involved in drama they will improve their own performance skills, develop their imagination and the ability to create drama. You will learn how to communicate intention, both as an individual and as part of a group. You will develop the skill of working with others - teamwork, which is an essential skill for life. You will develop your critical skills, through evaluation, analysis and reflection.



## How will I be assessed?

### Controlled Assessments:

#### **Component one: Devising (40%)** –

Students will create and develop a devised piece from a stimulus and perform the piece along with analysing and evaluating the process and performance.

**Component two: Performance from a Text (20%)** – Students will either perform in and/or design for two key extracts from a performance text.

**Component three (40%)** - This component focuses on the work of theatre makers and theatrical choices. There are two areas of focus – study of one complete performance text and a live theatre evaluation.



## How will this subject help me progress to college/sixth form & university?

GCSE Drama is an excellent starting point for further study at A Level and for University degree courses. Students of Drama develop creative skills, as well as knowledge and understanding of the Arts thus preparing them to study subjects such as: Performance Studies, Drama & Theatre Studies, Performing Arts, Media Studies, English Language and Literature, Philosophy, Sociology and Psychology, Dance, Music and Art. Cross-curricular opportunities, such as the investigation of specific periods of time and locations relating to the Drama context support the study of Humanities. Additionally, students develop generic skills that feed into all courses: speaking and listening, research and investigation, analysis and evaluation, public speaking and presentation, social skills, confidence, as well as literacy.

## What kind of careers could I follow with this subject?

The study of GCSE Drama paves the way to a wide range of career possibilities, including those involving public speaking and presenting, leadership and management, group co-operation and interaction, performing and communicating, teaching and learning, problem solving and investigation, and analysis and evaluation. It should be noted that GCSE Drama is a very demanding subject and students will be expected to attend extra rehearsals outside of normal school hours.



# GCSE English Language



## What will I study?

All students work towards GCSE English Language. The programme of study encourages students to read a wide range of texts, write for specific purposes and develop speaking and listening skills. The aim is to be able to use language in a wide range of contexts in order to participate effectively in society and employment. The programme of study also develops students' skills in communication, problem solving, critical thinking and working with others.

The topics and assessment methods are explained below. In addition, students are provided with many enrichment opportunities: theatre trips, visits from authors, poets and lecturers, speaking & listening activities and opportunities for wider reading.



## How will I be assessed?

Year groups will be studying for GCSE qualifications in line with government requirements. Students will be formally assessed via 100% external examinations. Students will be given regular opportunities in class to practise key exam skills in reading & writing to support examination success.



## How will this subject help me progress to college/sixth form & university?

English Language is a key qualification for acceptance onto most college or 6<sup>th</sup> form courses and most ask for at least a grade 5 or equivalent. To be able to successfully study English Language at A Level you should aim for at least a grade 6 in your GCSEs. At A Level, a grade C or above will help you gain access to a variety of university courses.



## What kind of careers could I follow with this subject?

English Language is a qualification that can support a wide range of career choices as many professions require a good standard of verbal and written communication. If you choose to study English Language at university many graduates go on to become teachers, barristers, solicitors, journalists and writers.

# GCSE English Literature



## How will I be assessed?

All students will be studying for altered GCSE qualifications in line with government requirements; students will be formally assessed via 100% examinations. The examinations will focus on extracts from the texts and expect students to write extended essays and analyse characterisation and plot. Texts studied will include Shakespeare, modern and 19th century texts and poetry.



## What kind of careers could I follow with this subject?

English Literature is a qualification that can support a wide range of career choices. The most obvious is teaching although employers often look for Literature when seeking to fill all types of management roles. Literature demonstrates the ability to handle large amounts of information in critical and creative ways. Literature develops one's intellectual capacities and those skills can be broadly applied anywhere from managing a car sales department, to banking or retail.

## What will I study?

All students work towards GCSE English Literature alongside English Language. The programme of study encourages students to read a wide range of texts (plays, poems and prose), and should extend students' enthusiasm for literature and how it influences the reader. Students explore texts from different cultures and traditions, connect ideas over time and become critical readers as well as enjoying reading for pleasure. The programme of study also develops students' skills in communication, critical thinking, working with others, and develops an appreciation of the world we live in.



## How will this subject help me progress to college/sixth form & university?

To be able to successfully study English Literature at A level you should aim for at least a grade 6 in your GCSEs. At A level a grade C or above will help you gain access to a variety of university courses. English Literature is a 'facilitating subject' – this means that many universities prefer it to other qualifications as it provides a good foundation for degree study no matter your choice of specialism.





# GCSE Geography

## What will I study?

The Geography GCSE curriculum offers a range of topics that appeal to different types of learners. Both human and physical geography topics are covered in KS4 in equal measure and these build on the skills and knowledge gained in Key Stage 3.

Fieldwork is conducted in an urban location and a more natural environment, where you will use practical research and data collection skills to collect and analyse information in the classroom in preparation for your examinations.

## AQA GCSE Geography

### Paper 1: Living with the Physical Environment

- Section A – The Challenge of Natural Hazards
- Section B – The Living World (Tropical Rainforest & Hot Desert)
- Section C – Physical Landscapes in the UK (Coasts and Rivers)

### Paper 2: Challenges of the Human Environment

- Section A – Urban Issues and Challenges
- Section B – The Changing Economic World
- Section C – The Challenge of Resource Management (Food)

### Paper 3: Geographical Applications and Skills

- Issue Evaluation
- Fieldwork
- Geographical Skills

## How will I be assessed?

There are three exams at the end of Year 11, each paper is 1 hour 30 minutes.

- Papers 1 and 2 are each worth 35% of the GCSE
- Paper 3 is worth the final 30%

The course is exam-based only; there is no controlled assessment element

The AQA GCSE exams in Geography include questions that allow students to demonstrate their ability to:

- Draw together their knowledge, understanding and skills from across the full course of study
- Provide extended responses

You will be regularly tested to ensure that you are making progress towards your target and to ensure revision strategies and exam skills specific to Geography are in place before your final examinations.

Test questions are taken from past exam papers to make the process relevant to you and an accurate reflection of your ability.

## How will this subject help me progress to college/6th form & university?

Geography GCSE will prepare you with a wide range of skills that future employers and higher education providers want to see in our young people. It teaches you about people, instilling tolerance and understanding to different cultures as well as developing young people's curiosity.

GCSE Geography is a sound base from which to progress to A Level studies and beyond. To be able to successfully study geography at A Level you should aim for at least a grade 6 in your GCSEs.

## What kind of careers could I follow with this subject?

Geography GCSE can lead you to a wide range of careers, including planning, economics, aid and charity work, politics and governance, environmental management, construction, armed forces, landscape architecture. For an in-depth look at careers in geography, check the Royal Geographic Association website that dedicates a large area to exploring careers through geography: <https://www.rgs.org/geography/choose-geography/careers/>



# GCSE History

## What will I study?

### Paper 1

#### Medicine Through Time c1250–present and the British sector of the Western Front, 1914–18.

In this unit you will learn about:

- c1250–c1500: Medicine in Medieval England
- c1500–c1700: The Medical Renaissance in England
- c1700–c1900: Medicine in eighteenth- and nineteenth-century Britain
- c1900–present: Medicine in modern Britain
- You will do a source-based enquiry on the British sector of the Western Front, 1914–18: covering injuries, treatment and the trenches.

### Paper 2

#### Superpower relations and the Cold War, 1941–91

In this unit you will learn about:

- The origins of the Cold War, 1941–58
- Cold War crises, 1958–70
- The end of the Cold War, 1970–91

#### Period study and British depth study - Anglo-Saxon and Norman England, c1060–88

In this unit you will learn about:

- Anglo-Saxon England and the Norman Conquest, 1060–66
- William I in power: securing the kingdom, 1066–87
- Norman England, 1066–88

### Paper 3

#### Weimar and Nazi Germany, 1918–39

In this unit you will learn about:

- The Weimar Republic 1918–29
- Hitler's rise to power, 1919–33
- Nazi control and dictatorship, 1933–39
- Life in Nazi Germany, 1933–39

## How will I be assessed?

At the end of the 2 years you will sit 3 exam papers.

- Paper 1: Thematic study and historic environment

This is a written examination and equates to 30% of your final grade.

- Paper 2: Period study and British depth study

This is a written examination and equates to 40% of your final grade.

- Paper 3: Modern depth study

This is a written examination and equates to 30% of your final grade.

There will be a variety of questions in the examination papers, though the History GCSE exams are mostly essay-based and require strong writing skills. Your teacher can show you some examples to help you practice and succeed. Examiners want you to do well and will be looking for comments to reward rather than looking to spot mistakes or gaps in your knowledge.

## How will this subject help me progress to college/sixth form & university?

History is a key qualification for acceptance onto many college or 6<sup>th</sup> form courses and most will ask for at least a grade 4. To be able to successfully study History at A Level you should aim for at least a grade 6 in your GCSEs. An A Level in History will help you gain access to a variety of university courses.

## What kind of careers could I follow with this subject?

History is a qualification that can support a wide range of career choices as many professions require the good standard of verbal and written communication that History GCSE demands. In recent research about jobs in the futures, the skill of analysis features heavily. If you choose to study History at university many graduates go on to become teachers, barristers, solicitors, journalists and writers, politicians and professional historians!



# WJEC Vocational Award in Hospitality and Catering (Technical Award)

## What will I study?

The WJEC Vocational Award in Hospitality and Catering has been designed to provide learners with the opportunity to develop a range of specialist and general skills that would support their progression to further study and employment in the field of hospitality.

You will study two units:

- The Hospitality and Catering Industry
- Hospitality and Catering in Action

Within these units you will learn how hospitality and catering providers operate and what they have to take into account to be successful. You will develop knowledge of issues related to nutrition and food safety, develop food preparation and cooking skills, as well as transferable skills of problem solving, organisation and time management, planning and communication.

## How will I be assessed?

The two units of work are assessed in different ways:

### Unit 1 - The Hospitality and Catering Industry (40% of final grade)

A 90 minute online examination taken in June of Year 11.

### Unit 2 - Hospitality and Catering in Action (60% of final grade)

An internally assessed non-exam assessment (NEA) assignment.

Completion of both units will result in the award of a grade as outlined below:



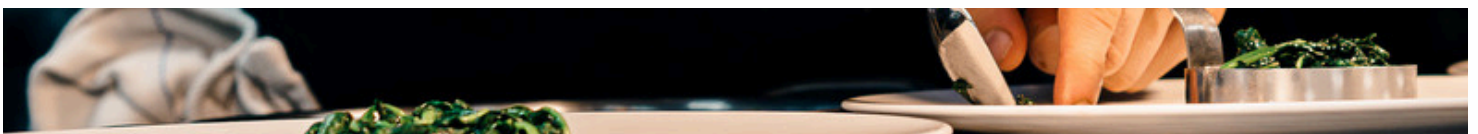
	GCSE equivalent
Level 1 Pass / Level 1 Merit	1
Level 1 Distinction	2
Level 1 Distinction *	3
Level 2 Pass	4
Level 2 Merit	5-6
Level 2 Distinction	7
Level 2 Distinction *	8-9



## How will this subject help me progress to college/sixth form & university?

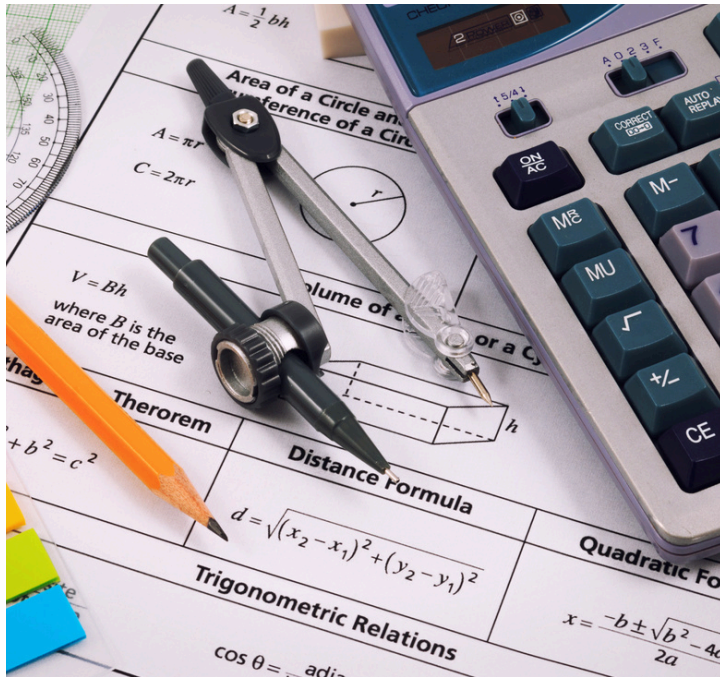
## What kind of careers could I follow with this subject?

Successful completion of this qualification could support entry to further Level 2 and 3 qualifications or A Levels that develop specific skills for work in hospitality and catering including professional food and beverage skills, professional cookery and food, science and nutrition. According to the British Hospitality Association, hospitality and catering is Britain's fourth largest industry and accounts for around 10% of the total workforce. Since 2010, over 25% of all new jobs have been within the hospitality and catering sector with the majority of new roles falling within the 18-24 age groups. This course could lead to careers in areas such as catering, hotel and bar management, food technology, tourism and event management.





# GCSE Mathematics



## How will I be assessed?

All students will be studying for the GCSE qualifications. There are two tiers of entry: Foundation (grades 1-5) and Higher (grades 4-9). Students will continue to be formally assessed entirely through external examinations at the end of Year 11 in Mathematics, via three exams with equal weighting towards their final grade. These papers will consist of one non-calculator paper, and two calculator papers. Students will be regularly assessed in the classroom to monitor progress, and given regular opportunities to practice key skills to support examination performance.



## What will I study?

All students work towards GCSE Mathematics. The programme of study requires students to study six key mathematical principles: Number, Algebra, Ratio, Proportion and Rates of Change, Geometry and Measures, Probability and Statistics. There is a greater emphasis on mathematical problem solving, requiring multi-step solutions, and students are expected to learn key mathematical formulae by heart. Where it is deemed beneficial, students will be supported to undertake an entry level maths qualification.

Students are provided with opportunities for enrichment, including working with The National STEM Centre and United Kingdom Mathematics Trust.



## How will this subject help me progress to college/sixth form & university?

Not only is mathematics a fundamental life skill, it is one of the key qualifications required for acceptance onto almost all college or sixth form courses.

To be able to successfully study mathematics beyond GCSE level you should aim to achieve at least a grade 6 by the end of Year 11. A Level mathematics will help you gain access to a wide range of university courses.

## What kind of careers could I follow with this subject?

Mathematics is a qualification that underpins a wide range of career choices, and is essential for some. If you choose to study Mathematics at university many graduates go on to become accountants, engineers, programmers, statisticians, architects or teachers.

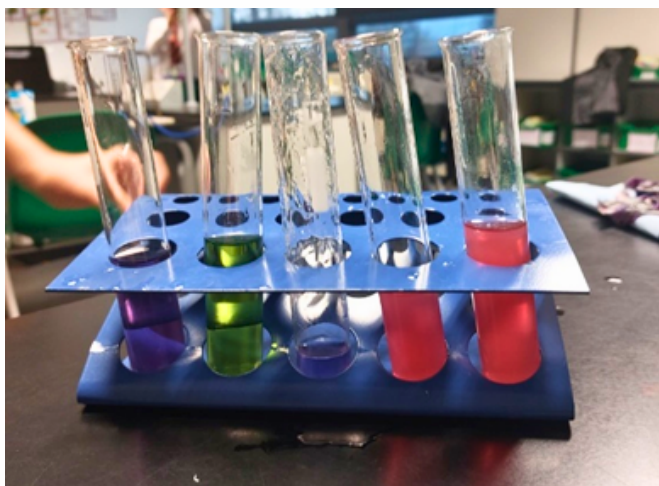




# GCSE Combined Science Trilogy

## What will I study?

The GCSE Science course allows students to gain two GCSE grades. Students will follow the AQA GCSE combined Science – Trilogy GCSE. This qualification includes studying a range of biology, chemistry and physics topics and challenges students to show an understanding of scientific numeracy. Students will also be expected to develop their scientific working skills, with a series of required practicals. Their knowledge in this area will be assessed in the terminal examinations. Students are challenged to explore the science that underpins everyday life by developing a critical approach to scientific evidence and methods.



## How will I be assessed?

Students' progress will be monitored throughout the course using summative and formative assessment methods. If students require support, additional intervention sessions will be offered. Students will be formally assessed via 100% external examinations. Students will have regular opportunities to acquire and develop practical scientific skills throughout the course. There will be series of compulsory investigations that will need to be completed in class and the skills acquired from completing these investigations will be assessed in the examinations. Students will be given regular opportunities in class to practise key exam techniques using literacy and numeracy skills to support examination success.

## How will this subject help me progress to college/sixth form & university?

Science is a desirable qualification for acceptance onto most college or sixth form courses. Students who have successfully studied GCSE Combined Science – Trilogy are prepared to go on to study all sciences at A Level and to do so you should aim for at least a grade 6-6 in your GCSEs. Achieving an A Level grade in one of the sciences will give you access to studying a degree in one of the sciences. It can also be used for acceptance on to Technical or Vocational qualifications such as Applied Science, Health, Healthcare Science or T Level Science.

## What kind of careers could I follow with this subject?

There are a great many careers that are science-based. Some students will specifically train at university for these careers, while others will complete a more general Science degree and then complete their specific training afterwards. Careers include astronomy, engineering, forensic science, medicine, microbiology, nuclear physics, pharmacology, physiotherapy and science teaching.



# Notes



# Notes



