

# Year 9 – Website Design

## What do I need to be able to do?

By the end of this unit, you should be able to:

- Understand the importance of audience and purpose when designing a website
- What makes an effective website?
- Plan a website
- Create a website
- Evaluate a website

## Keywords

**Web Browser:** Used to access the Internet

**Internet:** A global computer network providing a variety of information

**Format:** Change the way something looks (colour, font, size)

**Tools:** Used to format the documents

**Website:** a set of related web pages located under a single domain name

**Colour scheme:** a combination of colours

**Consistency:** same house style throughout

**Hyperlink:** linking to something else

**Navigate:** move around a website

**Header:** the top section of a website



## The purpose of websites:

Sell something

Promote/  
advertise

Give information

Entertain

Educate people

Reach a wide audience



## Tips for effective website design:

- Consistent house style
- Working hyperlinks
- Relevant images
- Good balance of text and images
- Contrasting colours
- Easy to use (user friendly)
- No SPAG mistakes



### What is good about the website?

- It is easy to use and find your way around – the navigation bar uses images related to the page it goes to
- The bright colours appeal to the target audience (young children)
- Uses more images than text
- The images are of a high quality

### What is poor about the website?

- Some of the text is not easy to read due to patterned backgrounds that are used – this could be improved by changing to a plain background or the transparency



# Year 9 – Website Design

## What is a header?

• A website header is one of the most valuable areas of your website. It runs across the top of the page and appears on every page of your website



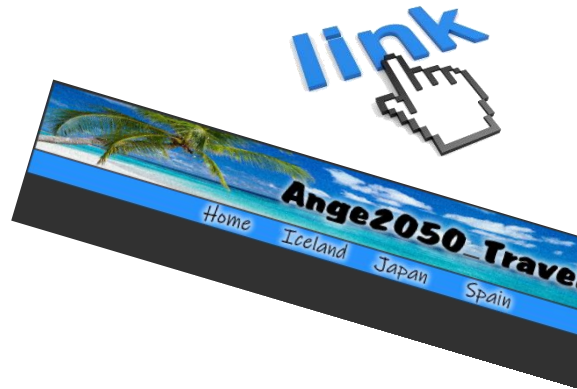
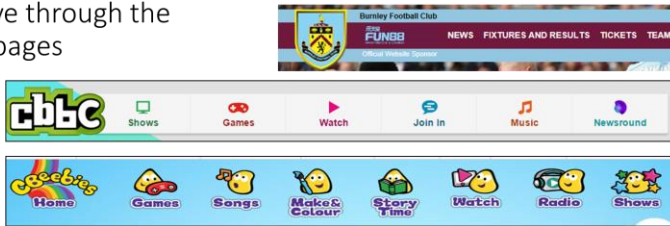
Success criteria for header:

It will:

- Include relevant images
- Include contrasting colours
- Fit with the house style
- Include the name of the website

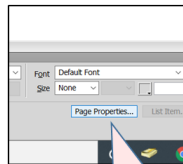
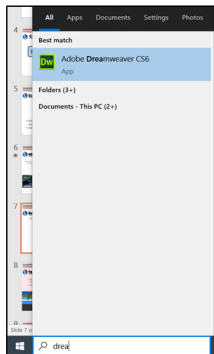
## What is a navigation bar?

A navigation bar runs along the top of a website to help users move through the different pages



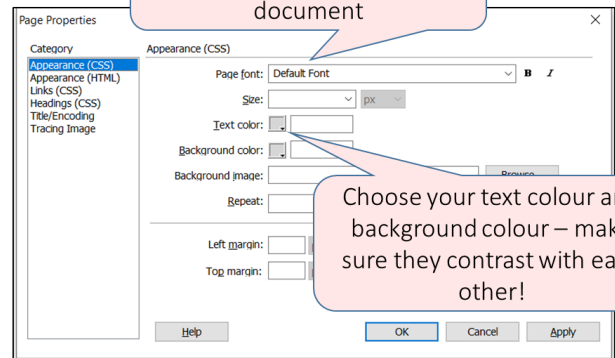
## Getting Started:

Open Dreamweaver:



Click Page Properties at the bottom

Choose your fonts and the size (you put this on your planning document)



Choose your text colour and background colour – make sure they contrast with each other!

