

# Year 11 Mathematics Learning Journey: Unit 3 - Graphs

## Step 9: Other graphs

Complete a table of values of  $y = x + \frac{1}{x}$  for x values of: 0.2, 0.4, 0.6, 0.8, 1, 2, 4, 5

## Step 8: Approximate solutions

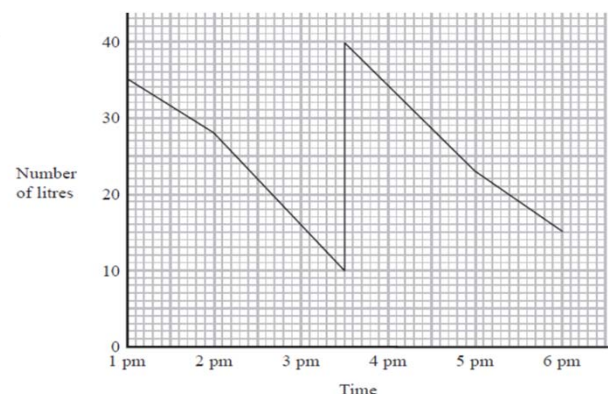
How do we find roots to an equation from a graph?

## Step 7: Roots, turning points and intercepts

Will the turning point be a maximum or minimum value on the graph  $y = x^2 - 2x - 13$

## Step 6: Quadratic Graphs

Complete a table of values for  $y = x^2 - 4$  for x values of -3 to 3.



## Step 5: Problem Solving with Graphs

The graph gives information about the number of litres of petrol in the tank of Jim's car during a journey. How many litres of Petrol did Jim put into the tank.

## Step 4: Real-life Graphs

On a distance time graph, what does a horizontal line represent?

## Step 3: Equation of a line

Find the equation of the straight line that passes through the points (-4,0) and (0,18).

## Step 2: Parallel lines

Write down the equation of the line parallel to  $y = -2x + 10$  and passing through the origin.

## Step 1: Linear Graphs

Plot the graphs of  
a)  $y = 2$   
b)  $y = x$   
c)  $x + y = 2$

Achievement resilience

Community PERSEVERANCE **Pride**

**SHUTTLEWORTH**

COLLEGE