

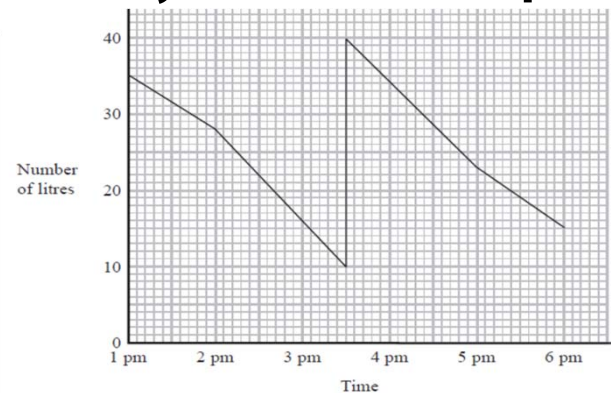
Year 11 Mathematics Learning Journey: Unit 3 - Graphs

Step 9: Quadratic Graphs

Complete a table of values for $y = x^2 - 4$ for x values of -3 to 3.

Step 8: Problem Solving with Graphs

The graph gives information about the number of litres of petrol in the tank of Jim's car during a journey. How many litres of Petrol did Jim put into the tank.



Step 4: Linear Graphs

Plot the graphs of
a) $y = 2$
b) $y = x$
c) $x + y = 2$

Step 5: Real-life Graphs

On a distance time graph, what does a horizontal line represent?

Step 6: Real-life Graphs

How can you identify a fixed charge on a real-life graph?

Step 7: Other graphs

The exchange rate for pounds to euros is $\text{£}1 = 1.20$ euros. Draw a suitable conversion graph for this.

Step 3: Gradient and y-intercept

Identify the gradient and y-intercept in the linear function $2y = 3x - 6$

Step 2: Plotting straight line graphs

Complete a table of values for $y = 2x + 3$ for values of x from 0 to 5.

Step 1: Coordinates

Explain how you would plot the coordinate $(-2, 1)$

Achievement resilience

Community PERSEVERANCE Pride

SHUTTLEWORTH COLLEGE